



2011 *Cedar City Charrette*



PRESENTATION ORDER

GROUP ONE – TRAILS

REGIONAL TRAIL

REGIONAL TRAIL HEADS

CITY CENTERS & TRAILS

GROUP TWO – ENTRY CORRIDORS

GROUP THREE – HISTORY

GROUP FOUR – DOWNTOWN DEVELOPMENT

MIXED USE

HOUSING

NEW DEVELOPMENT

GROUP FIVE – DOWNTOWN LANDSCAPE

DOWNTOWN LANDSCAPE & OPEN SPACE

DOWNTOWN LANDSCAPE

OPEN SPACE & PARKS

GROUP SIX – DOWNTOWN RELATIONSHIPS

INDIAN RESERVATION

COAL CREEK

SOUTHERN UTAH UNIVERSITY

SHAKESPEARE FESTIVAL



Cedar City Charrette



Regional Trails

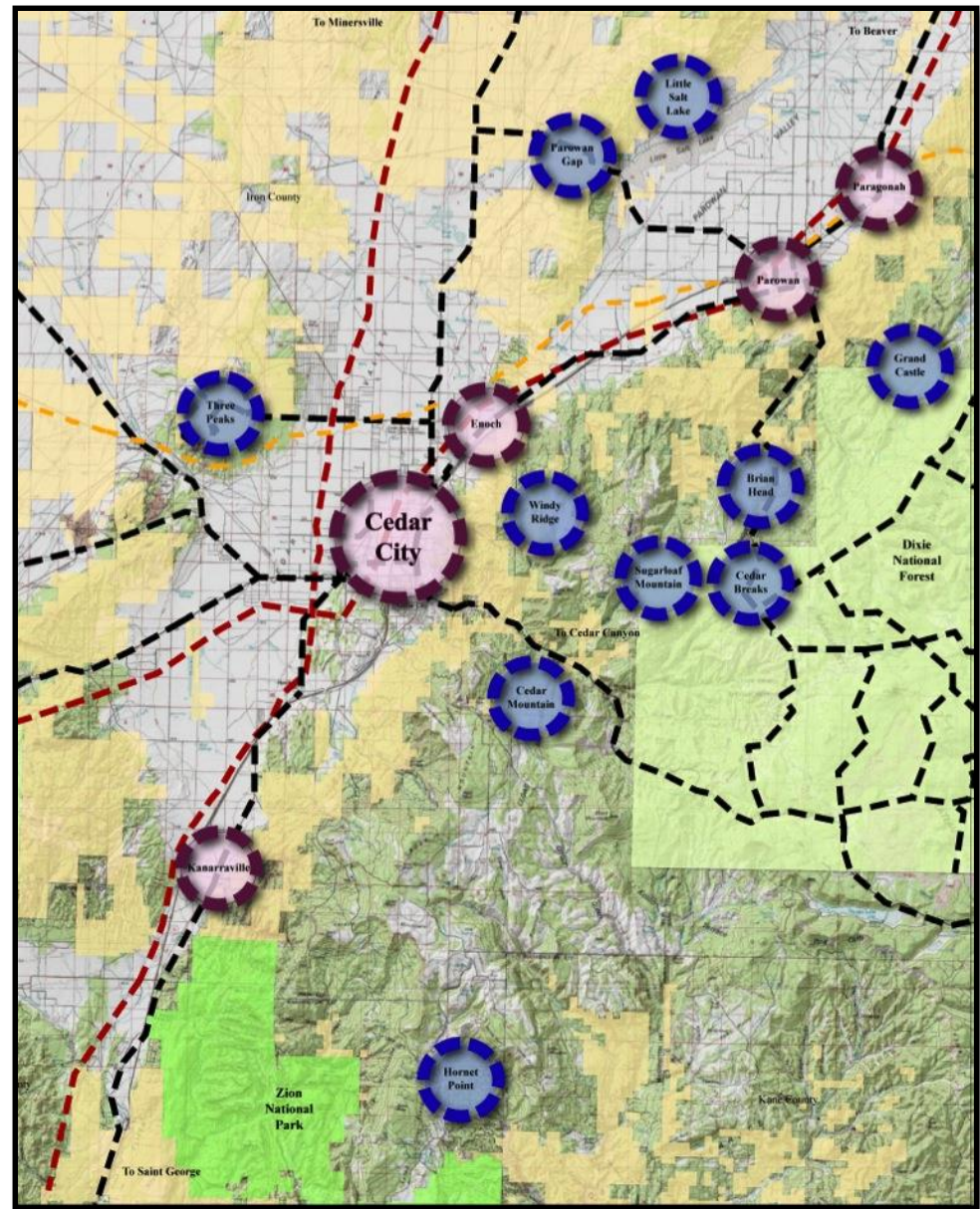
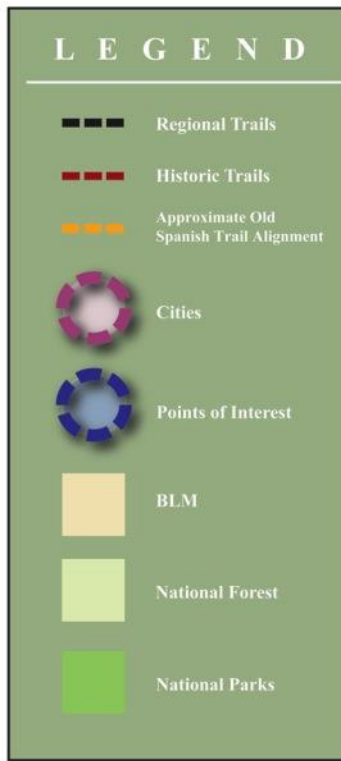
Cedar City Charrette



Regional Trails

Focus

- Connectivity of Key Places
- Establish hierarchy based on use
- Creation of experience on trails
- Inform appropriate design standards



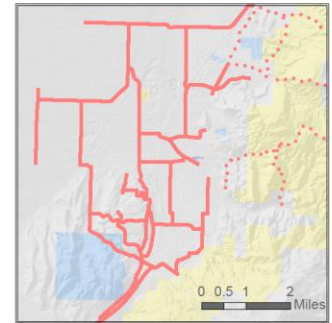
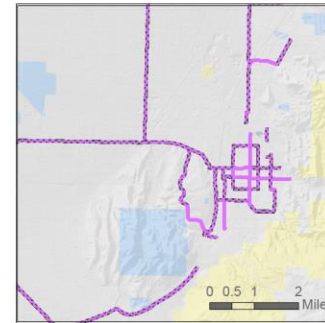
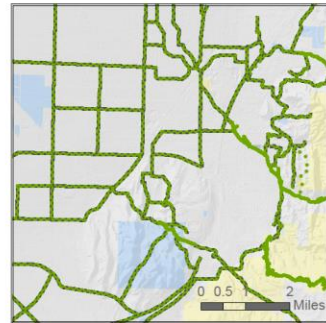
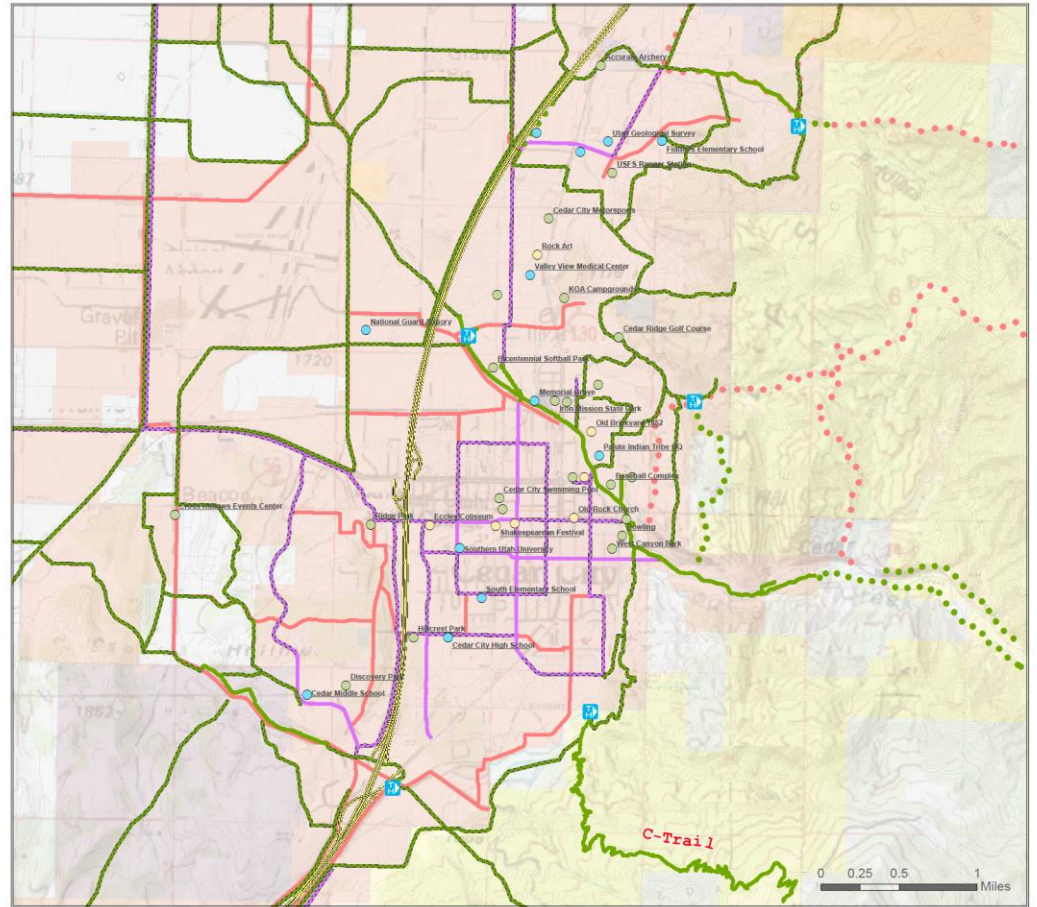
REGIONAL TRAILS
Cedar City Charrette



Cedar City, Enoch and Parowan

Primary Elements:

- *Existing vs. Future vs. Potential*



REGIONAL TRAILS
Cedar City Charrette



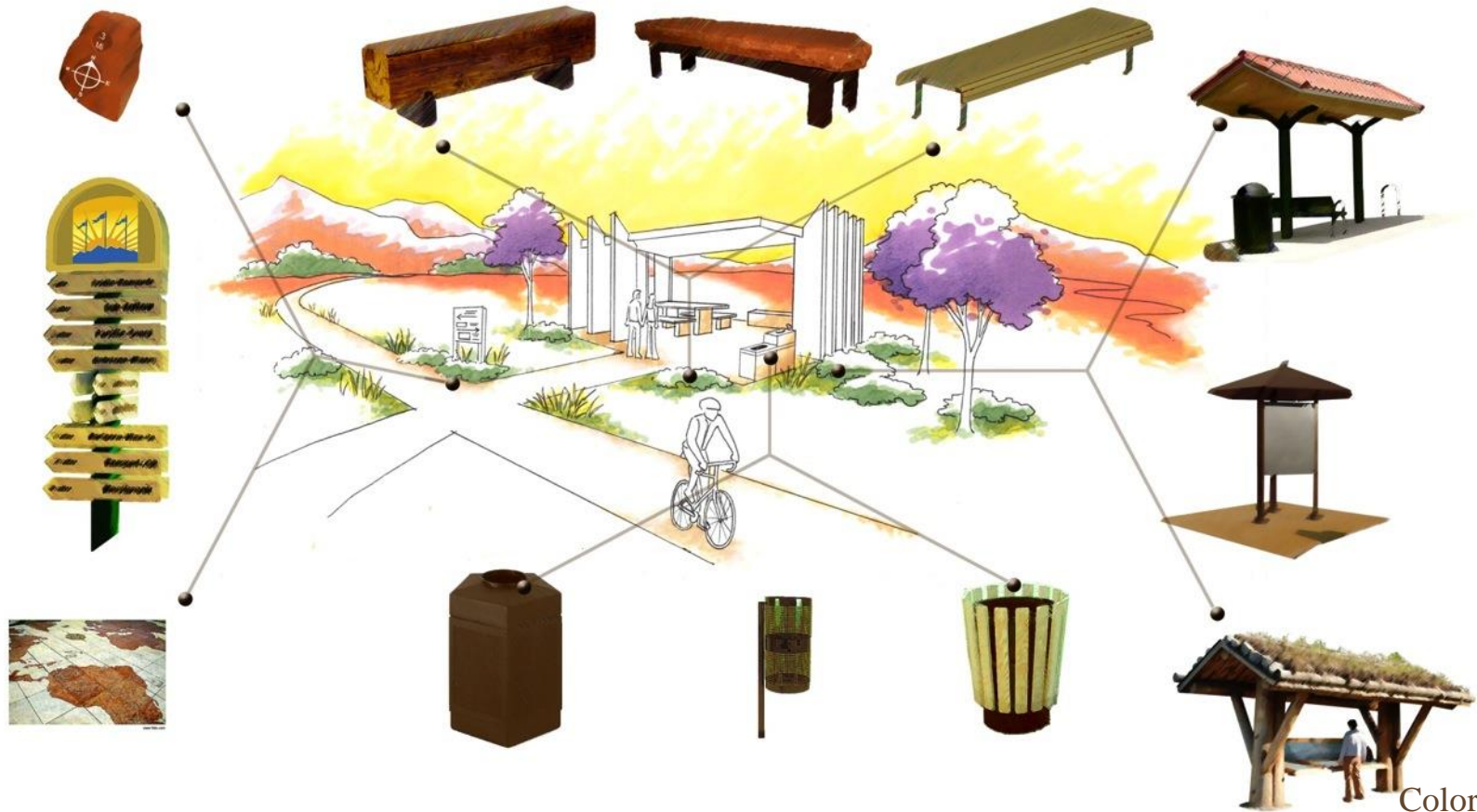
CULTURAL INTEREST ALONG TRAILS



Objectives:

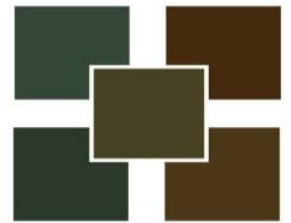
- .Community and Trail System
- .Experience Creation
- .Advertising and Publicity

INTERSECTIONS



- Signs
- Kiosks
- Benches
- Trash and Recycling

Color Palette:

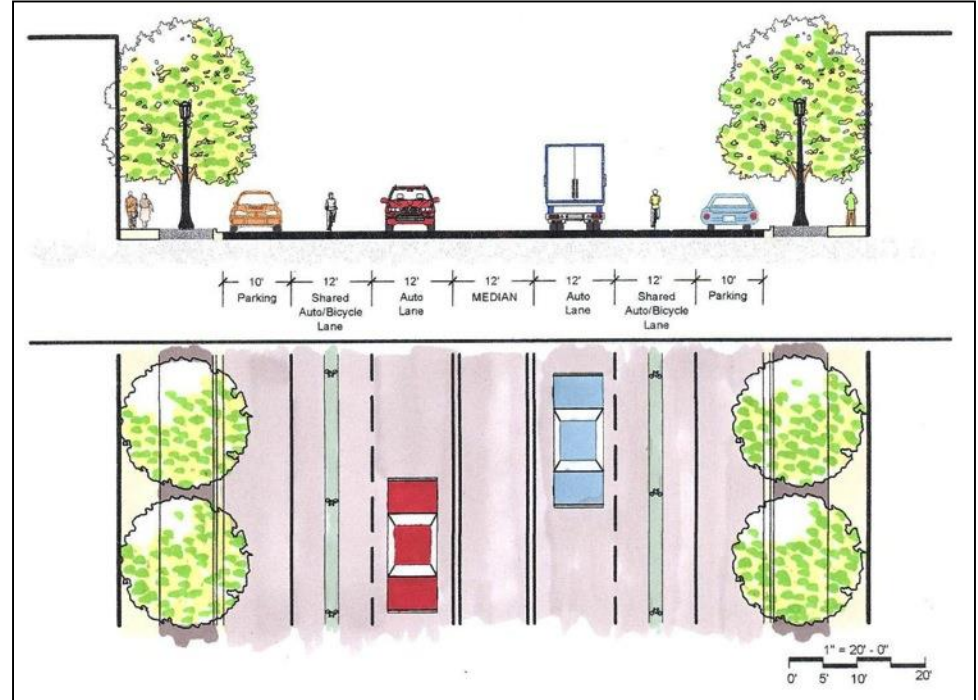


REGIONAL TRAILS
Cedar City Charrette

BIKE DESIGN STANDARDS

Urban Roadways

- Retain existing parking and travel lane
- Relatively Inexpensive
- Automobiles and bikes share the lane.
- Cars must give cyclists at least three feet of space.



- SLC implemented this concept in 2010 on two downtown streets.

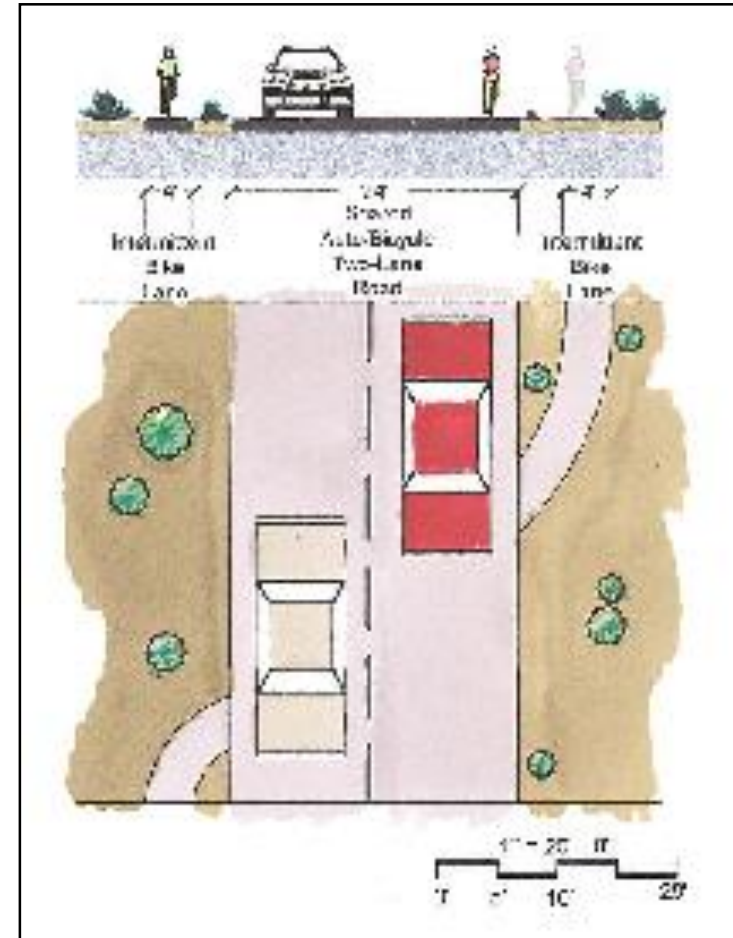
BIKE DESIGN STANDARDS

Rural Roadways



- Signage must be used on all roadways

- In this scenario, a bike lane extends off of the roadway every few miles for a short distance.
- This would be a cheaper alternative to paving a bike lane along the entire stretch of road.
- The bike lane outlets would provide variety for cyclists and allow cars to safely pass.



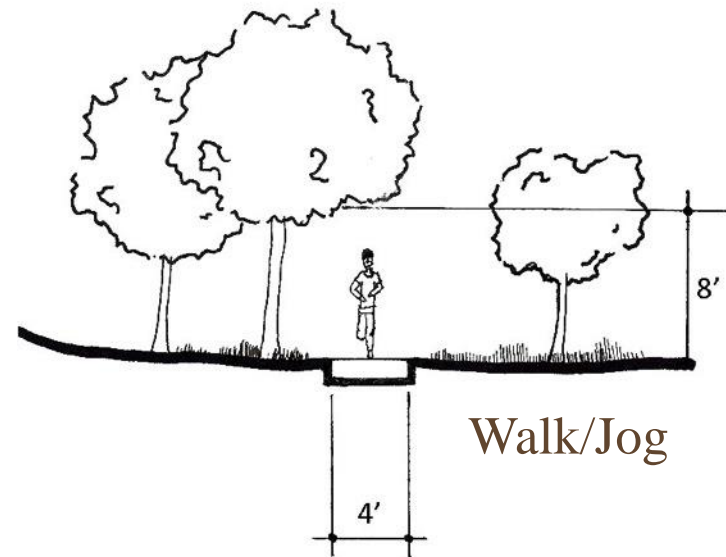
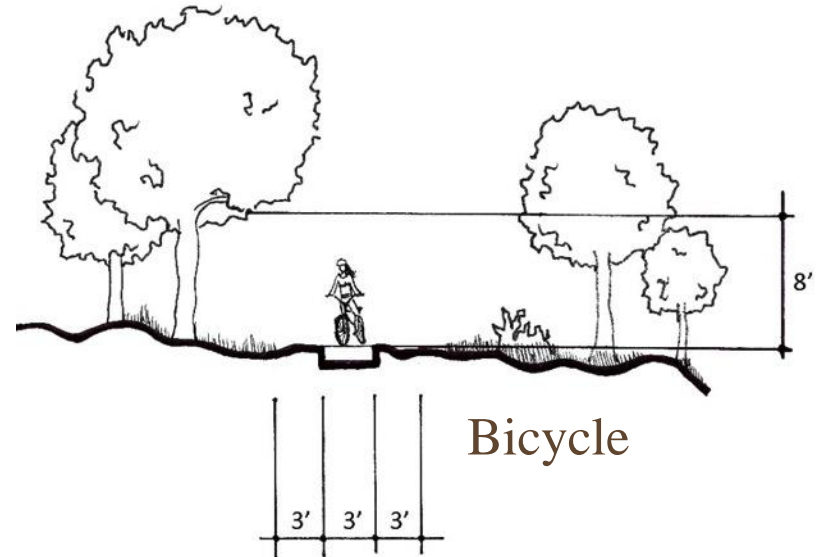
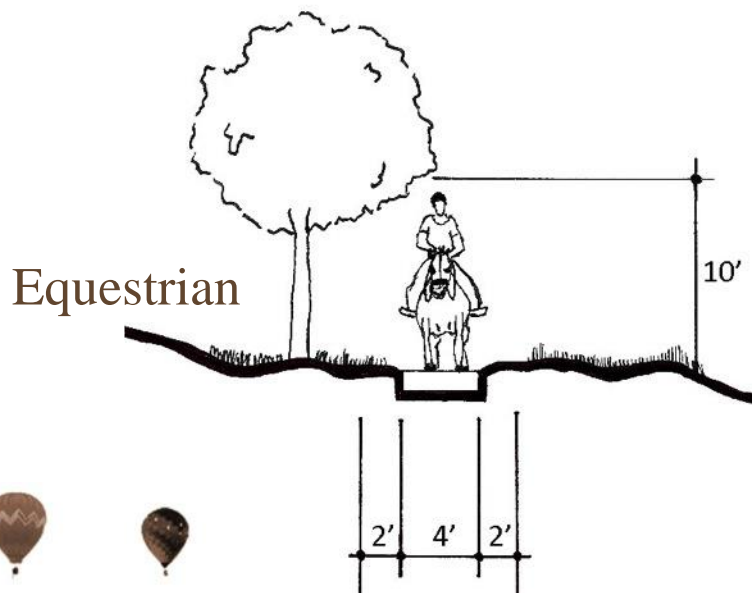
REGIONAL TRAILS

Cedar City Charrette

NON-MOTORIZED DESIGN STANDARDS

Materials Options:

- Asphalt or concrete
- Compacted Soil
- Angular Gravel





REGIONAL TRAILHEADS

Cedar City Charrette



UNDERSTANDING TRAILHEAD CLASSIFICATION

URBAN



SEMI-URBAN



RURAL



- Identify Characteristics of the Site and it's Surroundings
- Note Construction Materials
- Determine Proximity to Naturalistic View Sheds
- Implement New Designs Based on Best Fit

REGIONAL TRAILHEADS

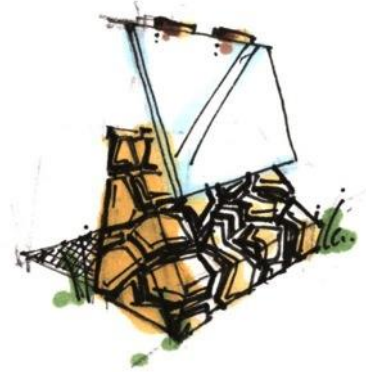
Cedar City Charrette



TRAILHEAD SIGNAGE

URBAN SIGNAGE

- Highly Designed
- Processed Materials
- Architecturally Significant Styles
- Create Dominant Visual Statements about the Area



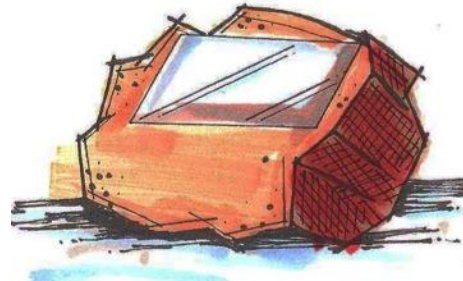
SEMI-URBAN SIGNAGE

- Reflect the Character of the Native Landscape
- Signage Provides Limited Structure to Surroundings
- Signage Helps Reinforce the Genius Loci



RURAL SIGNAGE

- Blend in with the Native Landscape
- Reflect Natural Materials, Shapes, and Colors
- Upholds the Integrity of the Landscape



REGIONAL TRAILHEADS

Cedar City Charrette

RURAL TRAILHEADS



REGIONAL TRAILHEADS

Cedar City Charrette

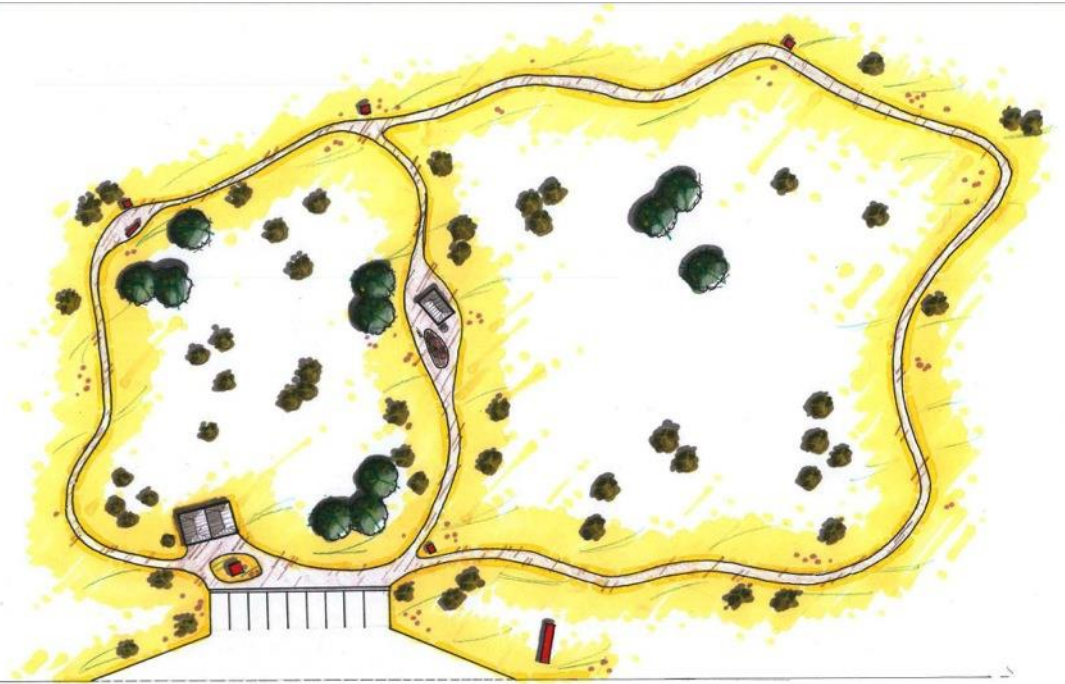
PAROWAN GAP

RURAL CLASS TRAILHEAD

- 20 Minutes North West of Parowan City
- Little Existing Development
- Scenic Views
- Naturalistic Distribution of Plant Communities

POTENTIAL USES AND PROPOSALS

- Naturalistic Restroom Facilities
- Shade Structures
- Interpretational Signs and Bulletins
- Crushed Native Stone Paving Surfaces
- Historic Preservation and Restoration
- Hiking and Cultural Exploration



REGIONAL TRAILHEADS

Cedar City Charrette

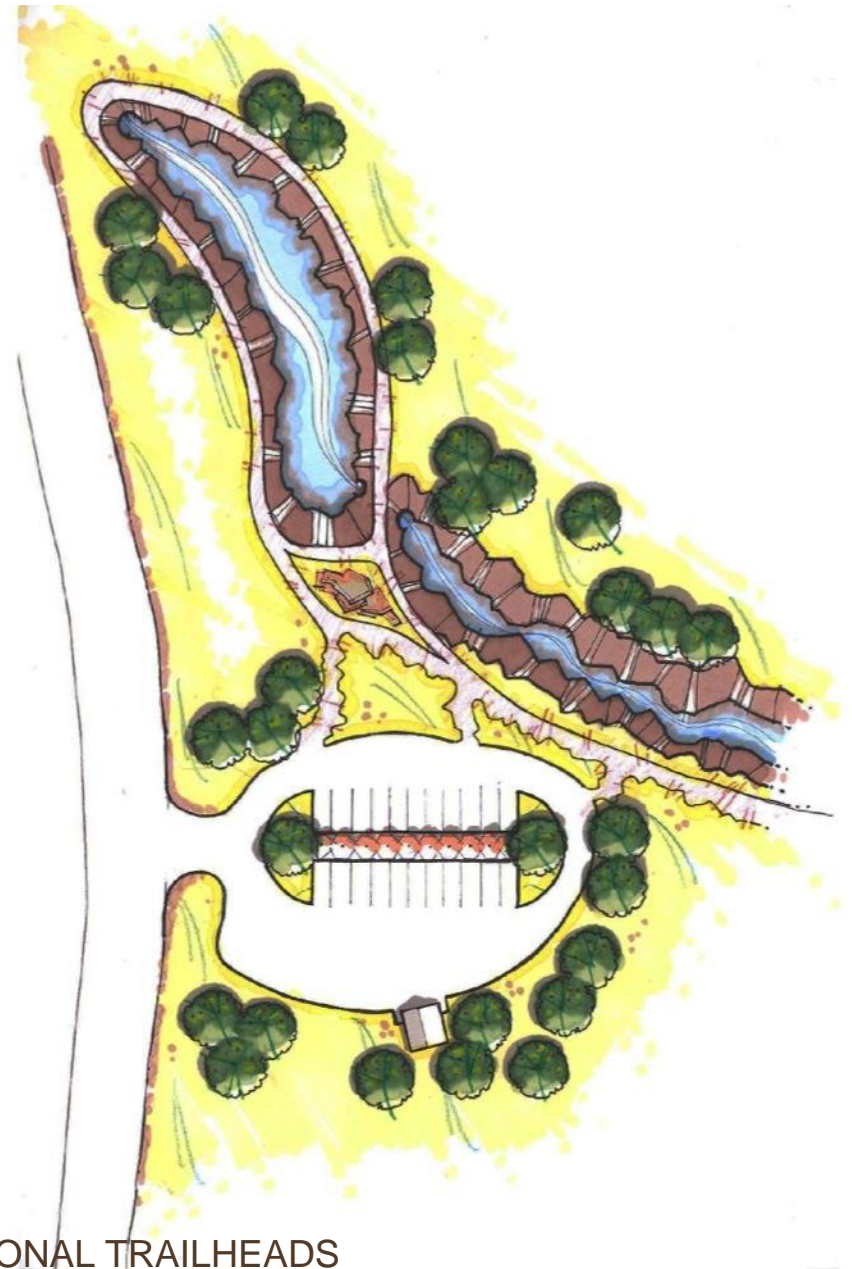
DRY CREEK

RURAL CLASS TRAILHEAD

- 15 Minutes South East of Parawon City
- Man Made Naturalistic Pond
- Native Vegetation
- Seasonal Water Flow in Dry Creek
- Scenic Canyon Views

POTENTIAL USES AND PROPOSALS

- Naturalistic Restroom Facilities
- Parking Partition that Reflects Man Made Basin
- Way finding Signs and Informational Bulletins
- Permeable Paving Surfaces in Parking Area
- Environmental Restoration and Preservation
- Hiking, Biking, and Limited ATV Usage



REGIONAL TRAILHEADS

Cedar City Charrette



SEMI-URBAN TRAILHEADS



REGIONAL TRAILHEADS

Cedar City Charrette

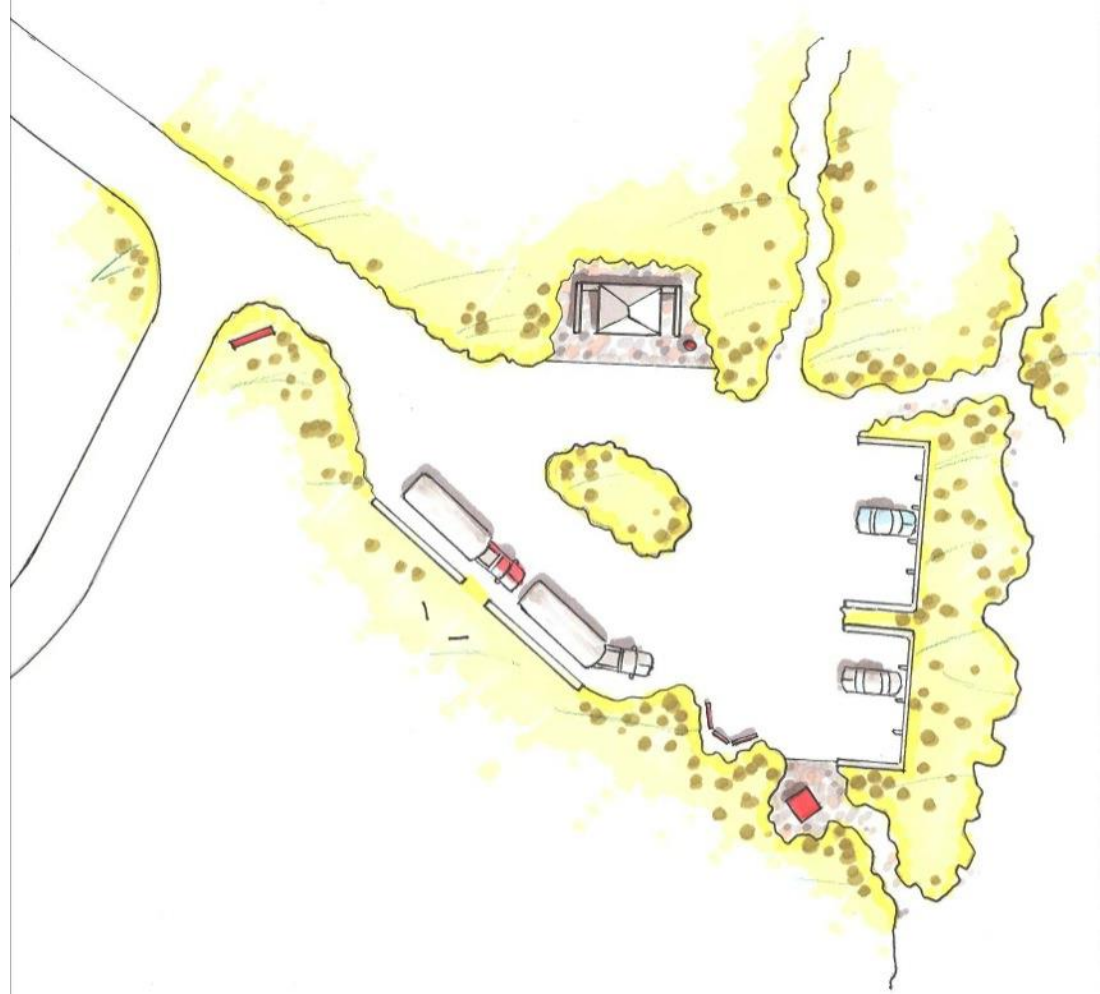
C-TRAIL

SEMI-URBAN CLASS TRAILHEAD

- Adjacent to Cedar City
- Highly Disturbed Site
- Close Proximity to Residential Areas
- Very High Hiker and Mountain Bike Usage
- Scenic Mountain Views and Gateways

POTENTIAL USES AND PROPOSALS

- Restroom Facility that Mimics Surroundings
- Interpretational and Way Finding Signage
- Permeable Parking Surfaces
- Equestrian Friendly Design
- Use by Hikers, Bikers, and Equestrians
- Re-vegetation of Surrounding Area with Native Grass Populations



REGIONAL TRAILHEADS

Cedar City Charrette

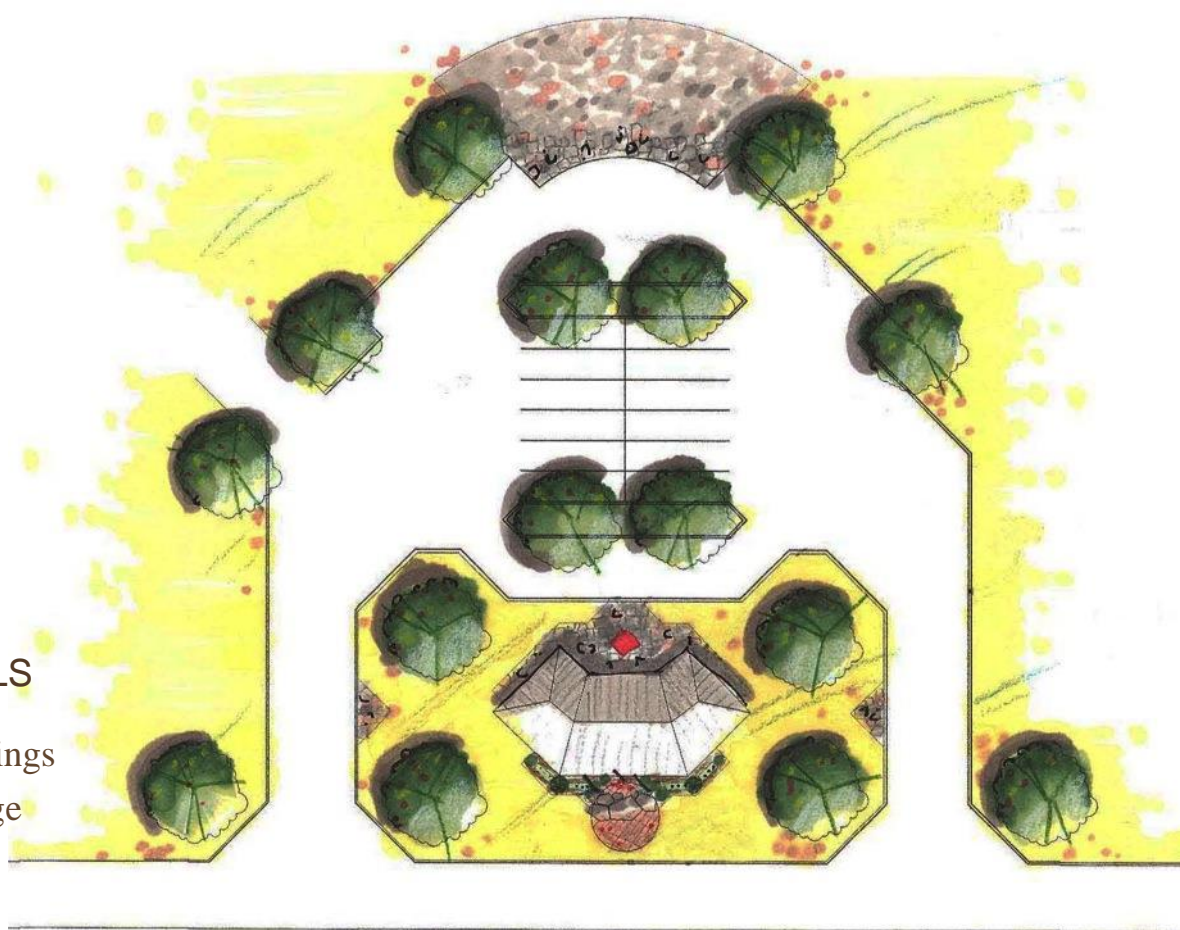
THREE PEAKS

SEMI-URBAN CLASS TRAILHEAD

- 30 Minutes North West of Cedar City
- Highly Disturbed Site
- Heavy ATV and Off Road Usage
- Gateway to a Major Recreation Area
- Concentrations of Invasive Species

POTENTIAL USES AND PROPOSALS

- Restroom Facility that Mimics Surroundings
- Interpretational and Way Finding Signage
- Permeable Parking Surfaces
- Equestrian and ATV Friendly Design
- Use by Hikers, Bikers, ATV's, and Equestrians
- Mitigation of Invasive Species
- Preservation of Native Plant Communities



REGIONAL TRAILHEADS

Cedar City Charrette



URBAN TRAILHEADS



REGIONAL TRAILHEADS

Cedar City Charrette

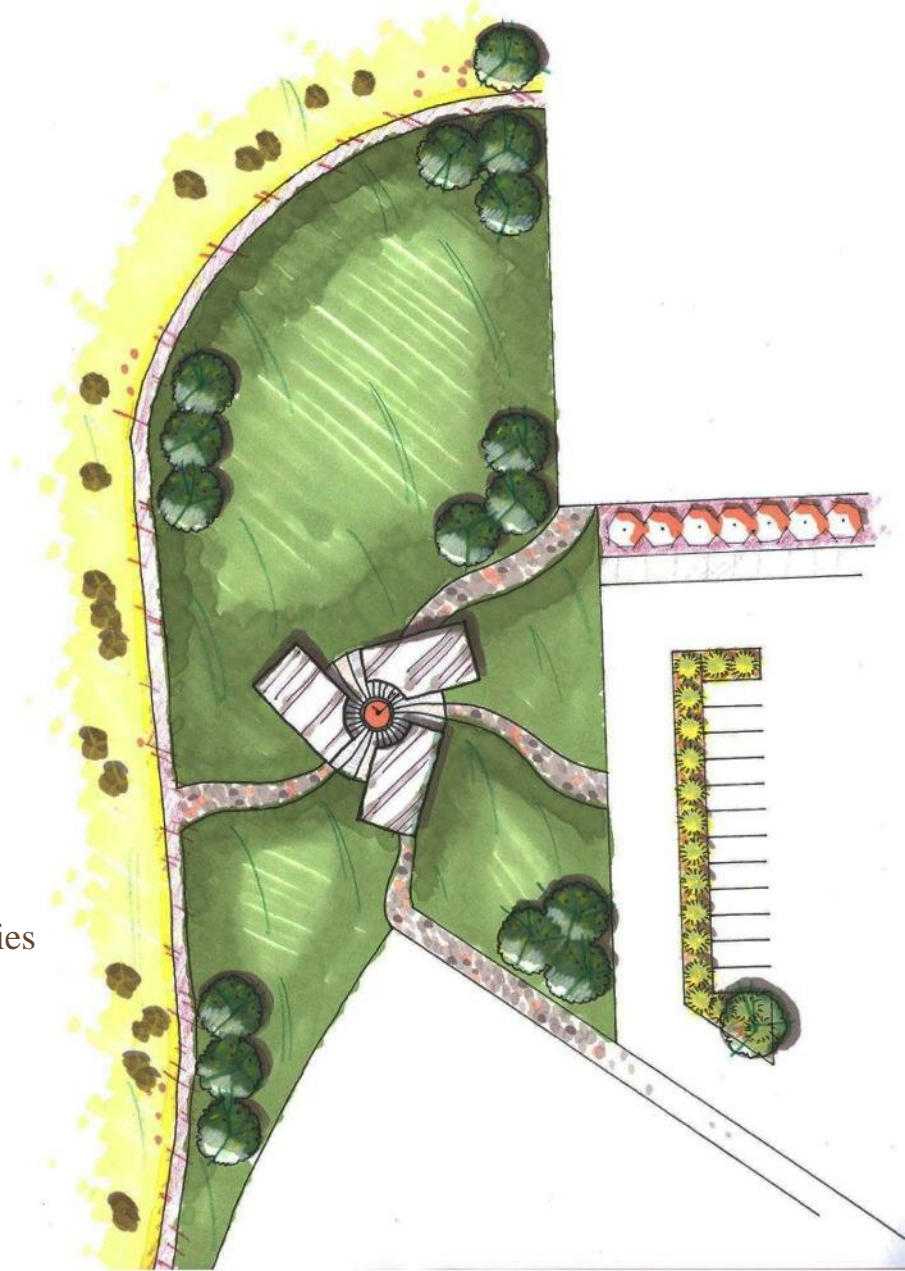
NORTH CEDAR CIRCUIT

URBAN CLASS TRAILHEAD

- Close Proximity to Major Recreational Facilities
- Non-Native Plant Communities
- Connecting Point for Many User Groups
- Highly Designed and Man Made Location

POTENTIAL USES AND PROPOSALS

- Restroom Facilities that Reflect Surrounding Structures
- Focal Point for Activities and User Groups
- Typical Park Planting Palette
- Impermeable Paving in Parking Areas and Trails
- Way finding Signs and Historic Interpretational Opportunities
- Primary Northern Destination of Circuit Trail System



REGIONAL TRAILHEADS

Cedar City Charrette



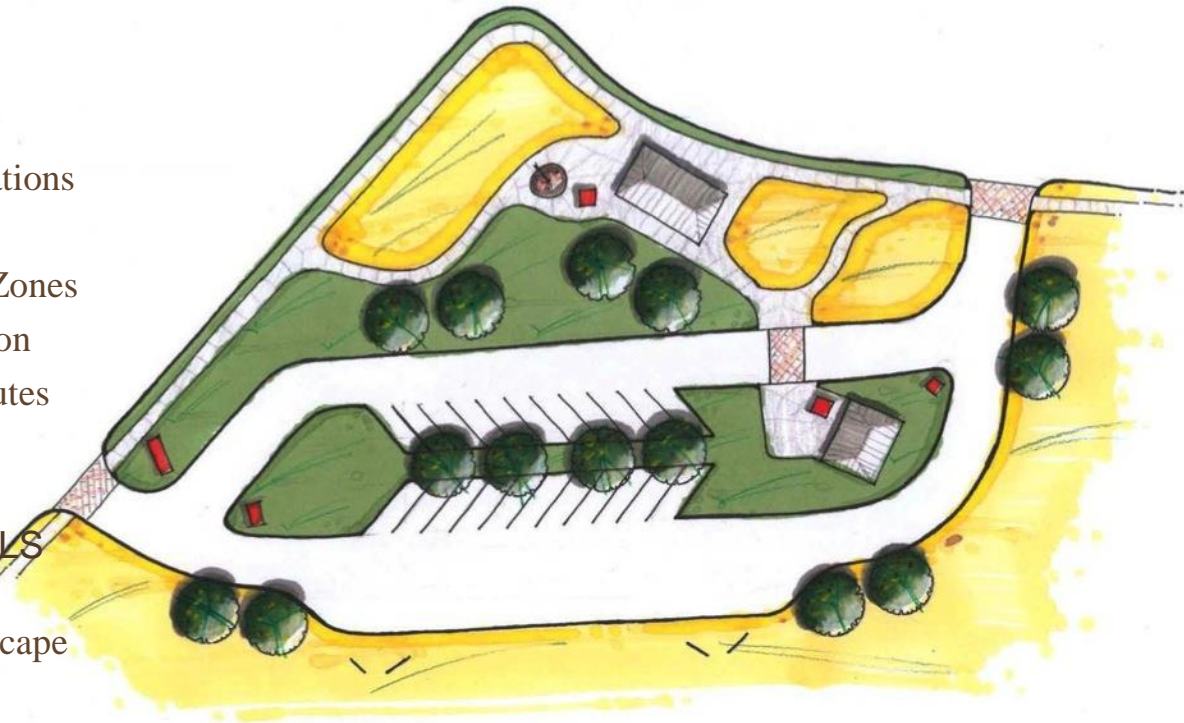
SOUTH CEDAR CIRCUIT

URBAN CLASS TRAILHEAD

- Close Proximity to Recreational Destinations
- Non-Native Plant Communities
- Access to Residential and Commercial Zones
- Highly Designed and Man Made Location
- Connection to Major Transportation Routes

POTENTIAL USES AND PROPOSALS

- Restrooms that Reflect the Urban Landscape
- Typical Cedar City Planting Palette
- Asphalt Paving For Parking Areas and Trail Entrances
- Way Finding Signs to Destination Areas
- Primary Southern Connection for Cedar City Circuit Trail
- Opportunities for Connection to Local Business Districts



REGIONAL TRAILHEADS

Cedar City Charrette





CENTERS AND URBAN CONNECTIONS

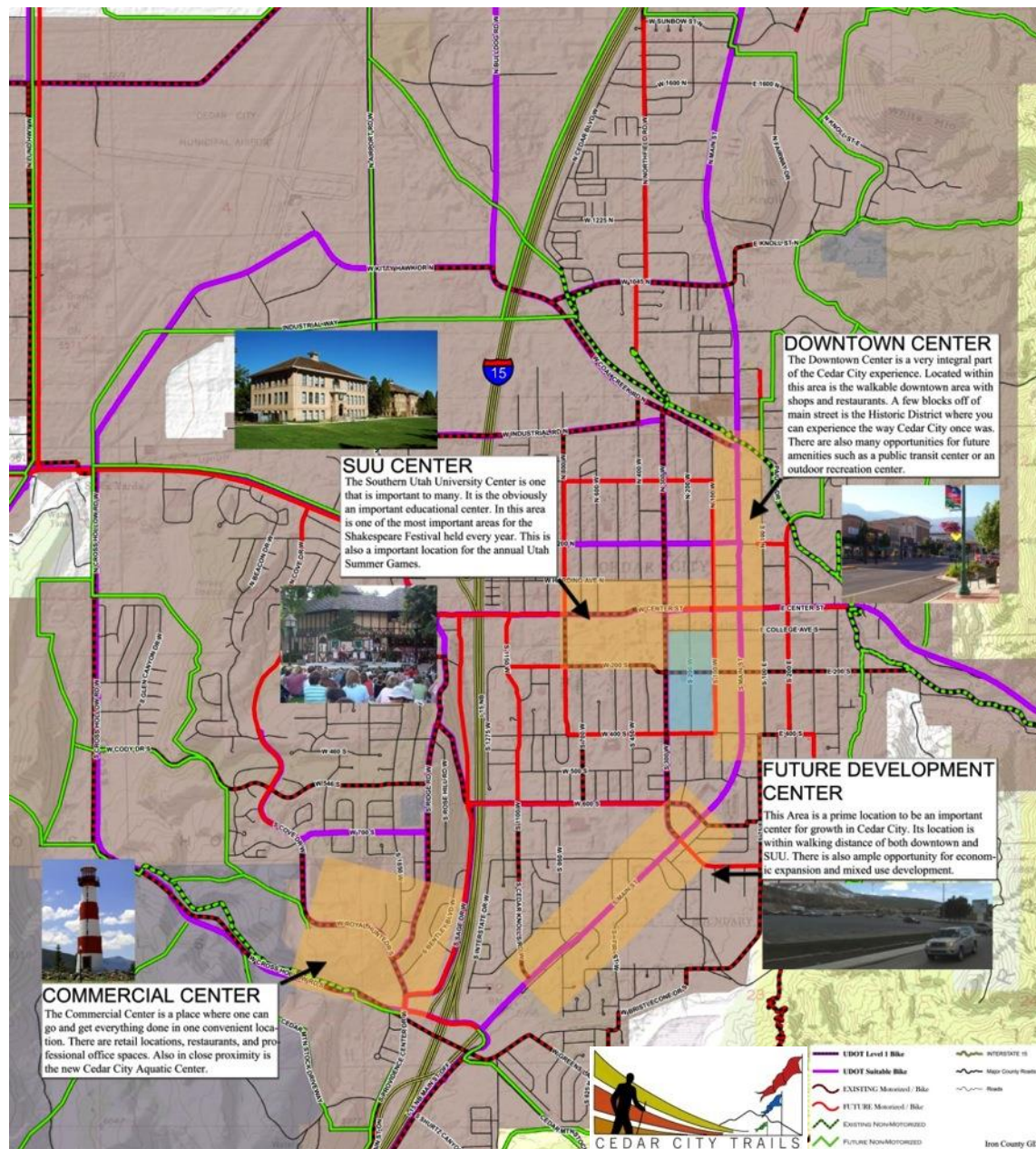
Cedar City Charrette



MAIN CITY CENTERS

Centers

- Sense of place
- Areas where there are many people and uses
- Close proximity of amenities
- Important places for local residents and tourists



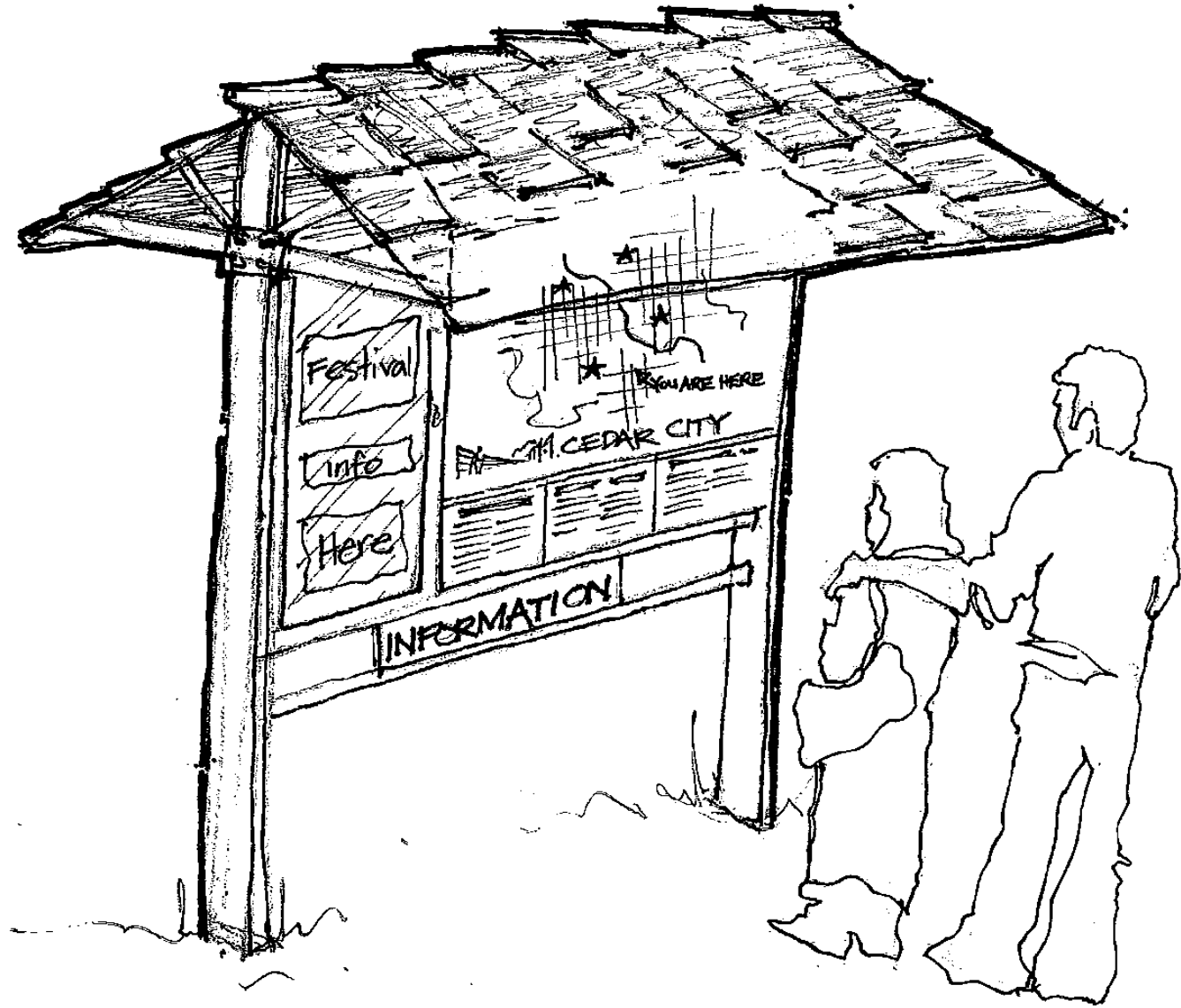
CENTERS AND URBAN TRAIL CONNECTIONS

Cedar City Charrette

Urban Trail Kiosk

Kiosk Features

- Map with a key and an indicator showing where you are at the moment on the map.
- List of nearby amenities including food, entertainment, restrooms, parks, views, public transportation etc.
- Distances from point A to point B.
- An area where posters can be pinned up for upcoming events and taken down.



CENTERS AND URBAN TRAIL CONNECTIONS 

Cedar City Charrette

POTENTIAL KIOSK INFORMATION

Trailhead Services				
Trailhead & Location	Dedicated Parking	Restroom Facilities	Drinking Water	Shade/Seclusion
Bear Claw A	•	•	•	•
1800 West Navajo Drive	•	•	•	•
Bear Claw B	•	•	•	•
1100 South 2700 West	•	•	•	•
Churchville	•	•	•	•
1750 North 900 West	•	•	•	•
Confluence	•	•	•	•
2000 South Convention Center Drive	•	•	•	•
J.C. Snow	•	•	•	•
900 South 400 East	•	•	•	•
Larkspur Park	•	•	•	•
815 East Fort Pierce Drive	•	•	•	•
Man O' War	•	•	•	•
800 West Man O' War Road	•	•	•	•
Mathis Park	•	•	•	•
1820 West Mathis Park Place	•	•	•	•
Planner Park	•	•	•	•
500 North Red Hills Parkway	•	•	•	•
Riverside	•	•	•	•
1000 East Riverside Drive	•	•	•	•
Road Oaks	•	•	•	•
1250 North 1400 West	•	•	•	•
St. James	•	•	•	•
600 East St. James Lane	•	•	•	•
Sand Hollow	•	•	•	•
1144 North Lava Flow Drive	•	•	•	•
Texas	•	•	•	•
2300 North Snow Canyon Parkway	•	•	•	•
Temple Quarry	•	•	•	•
300 South Cherokee Drive	•	•	•	•
Townsquare Park	•	•	•	•
1831 South Dixie Drive	•	•	•	•
Woods Hill	•	•	•	•
2330 South Hill Road	•	•	•	•

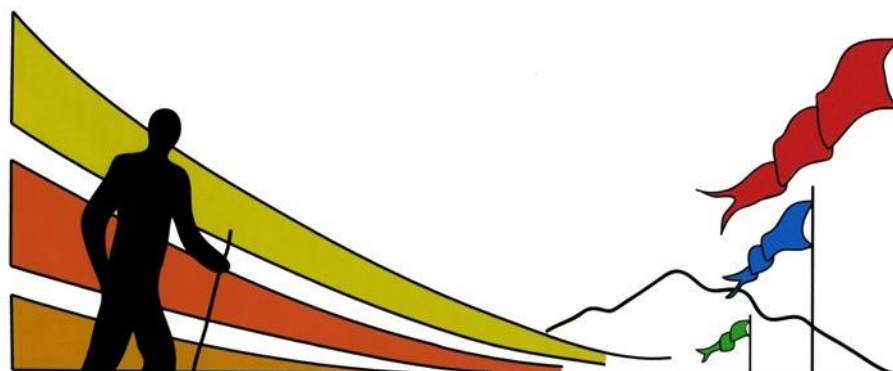
Urban Trail Information				
Trailhead & Location	Paved Surface	Natural Surface	Scenic Views	ADA Accessible
Bear Claw Poppy - A	•	•	•	•
Bear Claw Poppy - B	•	•	•	•
Bear Claw Poppy - C	•	•	•	•
Bloomington Hills North	•	•	•	•
Bluff Street	•	•	•	•
Fort Pierce Wash	•	•	•	•
Fort Pierce Industrial Park	•	•	•	•
Gas Line	•	•	•	•
Halfway Wash	•	•	•	•
Highway 18 (2007 overwash)	•	•	•	•
Hilton Drive	•	•	•	•
Mathis Park	•	•	•	•
Middletown Wash	•	•	•	•
Rim Rock	•	•	•	•
Sand Hollow Wash	•	•	•	•
Santa Clara River	•	•	•	•
Snow Canyon	•	•	•	•
South Bloomington/SunRiver	•	•	•	•
Temple Quarry	•	•	•	•
Virgin River	•	•	•	•
Virgin River South	•	•	•	•
Woods Hill	•	•	•	•



Potential Kiosk

Available Trail Amenities

Trail Map



CEDAR CITY TRAILS

Trails Logo

CENTERS AND URBAN TRAIL CONNECTIONS



Cedar City Charrette

Trail Plantings



Before



After



Kiosk and Planting

CENTERS AND URBAN TRAIL CONNECTIONS

Cedar City Charrette



TRAIL PLANTINGS



Park Cross Section 1" - 4'



open space cross section 1"=4'

CENTERS AND URBAN TRAIL CONNECTIONS 

Cedar City Charrette

TRAIL PLANTINGS



City Trails



Privacy Trail Planting



Open Space Trail

CENTERS AND URBAN TRAIL CONNECTIONS 

Cedar City Charrette



ENTRY CORRIDORS

Cedar City Charrette

WHAT ARE ENTRY CORRIDORS?

- ORIENT
- ADVERTISE
- INVITE
- INSPIRE



ENTRY CORRIDORS

Cedar City Charrette



ANALYSIS OF CURRENT ENTRY CORRIDORS

- Lack of informative signage and landmarks
- Unsafe pedestrian conditions
- Excessive curb cuts
- “Image” of city not clear



ENTRY CORRIDORS

Cedar City Charrette

IDEAS

- Advertise Early



30 MILES OUT



20 MILES OUT



10 MILES OUT



ENTRY CORRIDORS

Cedar City Charrette

IDEAS

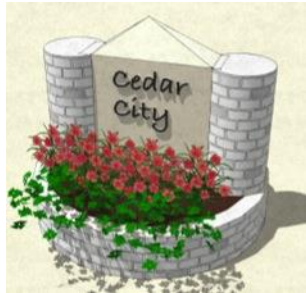
- Distinct Landscaping



ENTRY CORRIDORS
Cedar City Charrette

IDEAS

- Add strategically placed landmarks



ENTRY CORRIDORS

Cedar City Charrette

IDEAS

- Create Grand Entrance



ENTRY CORRIDORS
Cedar City Charrette



KEEPING HISTORIC
DOWNTOWN HISTORIC
Cedar City Charrette

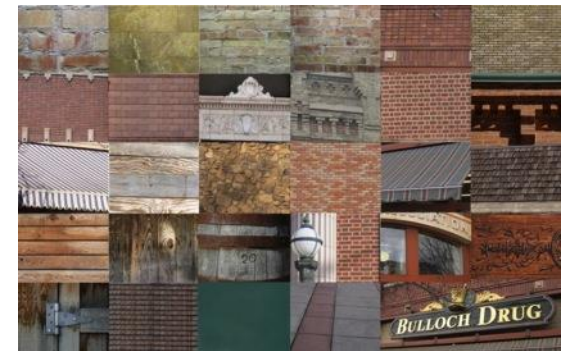


Before & After Examples of National Register Historic Homes

BEFORE



AFTER



Potential Materials Palette



KEEPING HISTORIC DOWNTOWN HISTORIC

Cedar City Charrette

Restored Cedar City Cinema



Current Cedar City Cinema



Restored Cedar City Cinema



KEEPING HISTORIC DOWNTOWN HISTORIC

Cedar City Charrette

Restored Historic Downtown Main Street



Before



After



KEEPING HISTORIC DOWNTOWN HISTORIC

Cedar City Charrette

Restored Historic Downtown Main Street



Before



After



KEEPING HISTORIC DOWNTOWN HISTORIC

Cedar City Charrette

Restored Historic Downtown Main Street



Before



After

KEEPING HISTORIC DOWNTOWN HISTORIC

Cedar City Charrette



Parking Analysis & Parking Mitigation

Parking Analysis Map
showing current parking



Historic Parking

- Parking is located behind the buildings creating a more aesthetically pleasing and pedestrian friendly main street

Modern Parking

- Parking is located in front of the building which does not coincide with the historical main street spatial relationships

KEEPING HISTORIC DOWNTOWN HISTORIC

Cedar City Charrette

National Historic Register



The map shows the historic homes on the National Register that have already started to become a part of the transformation from a residential home to a functioning business

Shown here are two repurposing options for an existing residential home in Cedar City.



Good example



Bad example

KEEPING HISTORIC DOWNTOWN HISTORIC

Cedar City Charrette

Examples of Functioning Businesses in Historic Homes



Potential Businesses:

Bed & Breakfast
Used Bookstore
Cafe
Restaurant
Coffee Shop
Chocolate Shop
Salon
Candy Shop

Art Gallery
Toy Shop
Antique Store
Jewelry Store
Portrait Studio
Real Estate Office
Thrift Store
Costume Shop
Historic Residential
Museum

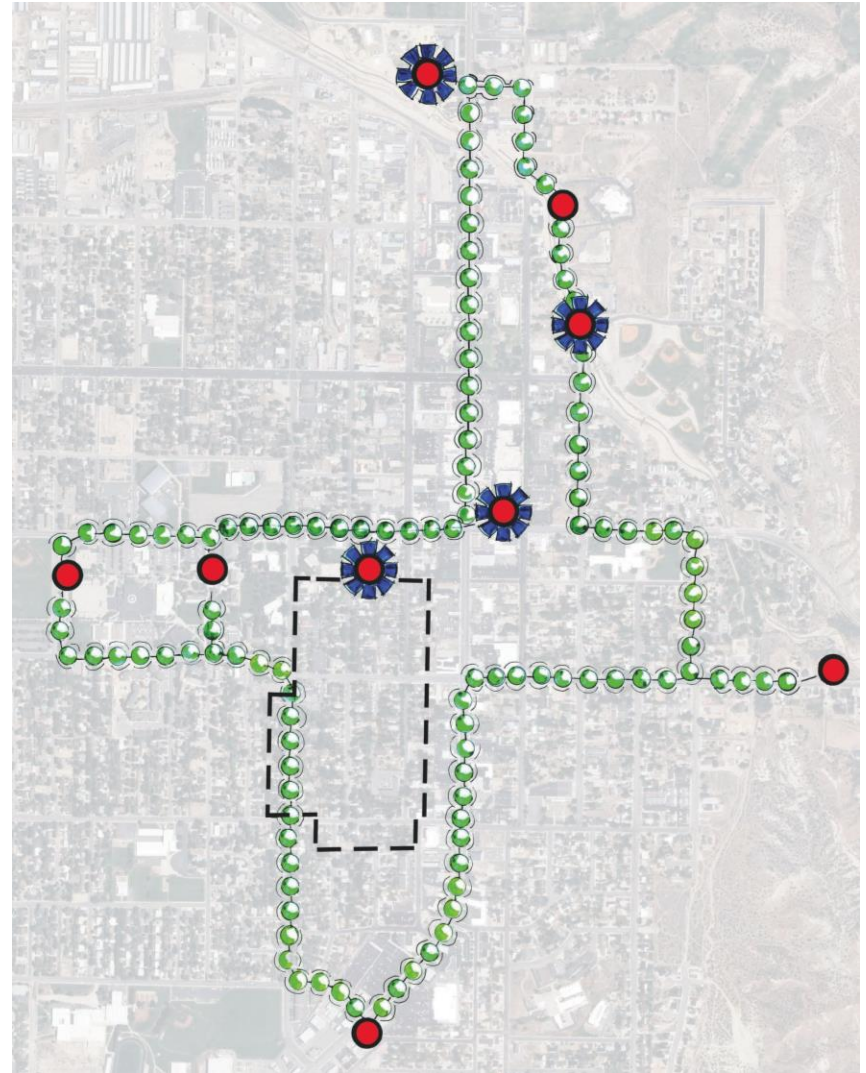
KEEPING HISTORIC DOWNTOWN HISTORIC

Cedar City Charrette



Cedar City Historic Driving Tour

- A. Old Rock Church
- B. Frontier Homestead State Park Museum
- C. Piute Indian Reservation
- D. Veteran's Memorial Park
- E. Chaffin Grist Mill
- F. Old Brick Yards
- G. Old Sorrel Statue
- H. Southern Utah University Old Main
- I. Shakespeare Festival Grounds



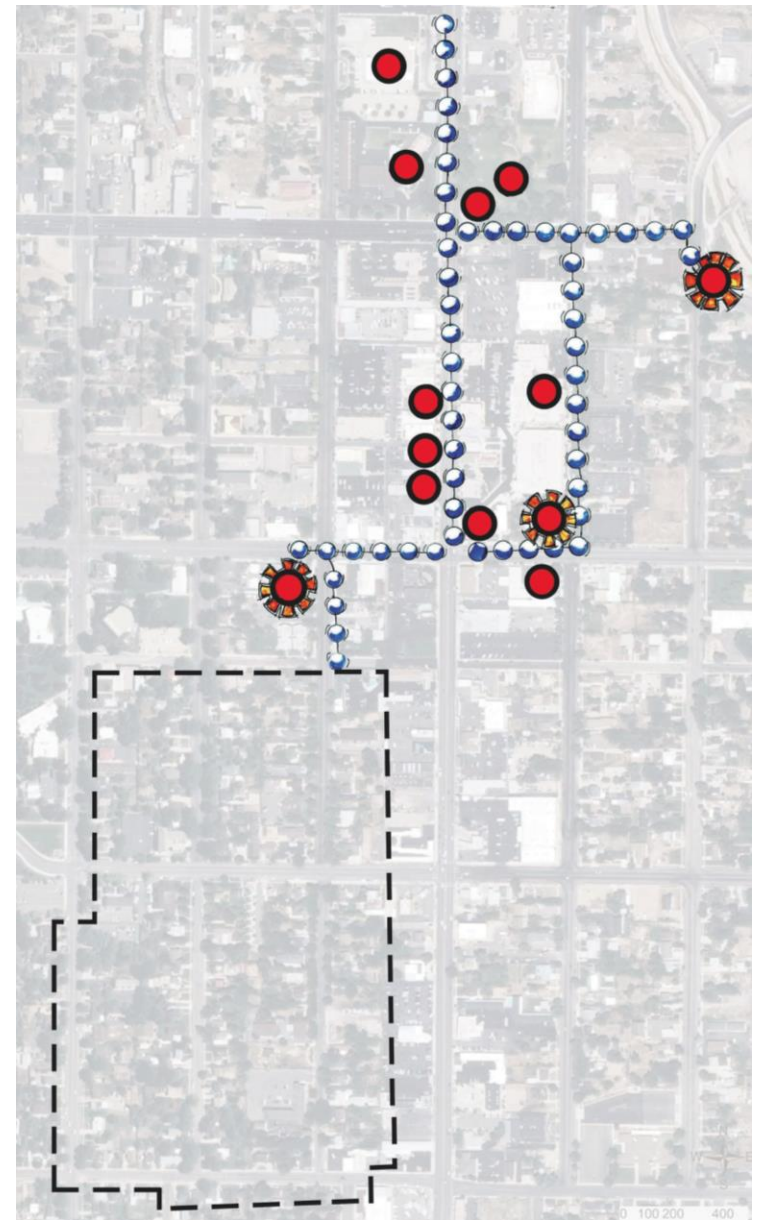
KEEPING HISTORIC DOWNTOWN HISTORIC

Cedar City Charrette



Cedar City Historic Walking Tour

- A. Old Rock Church
- B. Former Hunter House Location
- C. Henry Lunt Statue
- D. Southern Utah University Old Main
- E. Richard Harrison Sculpture
- F. Cedar City Cinema
- G. Francis Webster Statue
- H. Heritage Center Festival Hall
- I. Cedar City Railroad Depot
- J. Cedar City Post Office
- K. Helen Foster Snow Statue
- L. Spanish Trail Marker
- M. Veteran's Memorial Park



KEEPING HISTORIC DOWNTOWN HISTORIC

Cedar City Charrette





MIXED USE IN THE DOWNTOWN

Cedar City Charrette



LOOKING AT MIXED USE IN CEDAR CITY

A Vision for Downtown's Future



Cedar City's vision for the downtown includes such goals as:

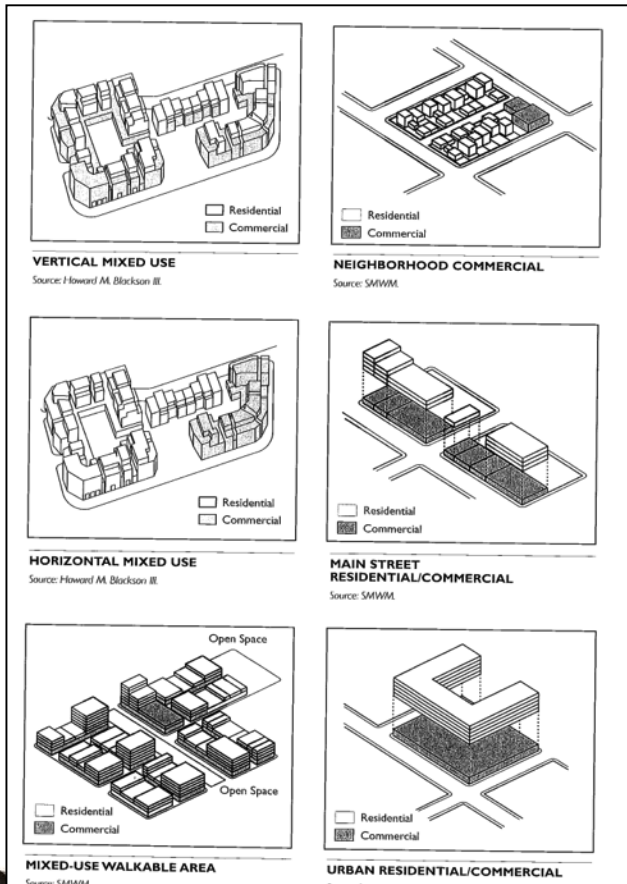
- Expanding the downtown,
- Using denser housing to buffer neighborhoods from downtown's activity,
- Looking for ways to pull students and festival goers to Main Street ,
- Better connections to existing neighborhoods from Main Street,
- Utilizing existing neighborhood parcels, and
- Increasing the housing in and near downtown.



MIXED USE IN THE DOWNTOWN

Cedar City Charrette

WHY MIXED USE?



Some different mixed-use configurations.

“Mixed-use” refers to a type of development that allows people the opportunity to work, live, shop, and play all in the same community. It is characterized by different kinds of land uses (residential, office, retail, etc.) being located within the same building or in separate buildings on the same parcel.

Some of the advantages offered by mixed-use developments are:

- Vitality** - diversifies a monochromatic landscape
- Sustainability** - denser clusters use less energy and resources than spaced buildings
- Sense of Community** - caters to a diversity of people and brings diverse groups together
- Convenient Access** - reduces the need for single vehicle trips and creates walkability
- Longer Hours of Active Street Life** - creates economic sustainability and commercial stability
- Safety** - mixing residential, commercial and professional within a compact area ensures activity throughout the day and evening creating a sense of safety.
- Historic Renovation/Preservation/Reuse** - mixed uses lead to the need for mixed architectural styles as well, which entails preserving the historic construction.

MIXED USE IN THE DOWNTOWN

Cedar City Charrette

HOW IT COULD WORK:

“GALLERY ROW” LIVE-WORK ARTIST LOFTS & SHOPS

“This example project shows how mixed-use development could help the city accomplish its goals to:

- Support tourism with main-to-campus connection.
- Use innovative solutions supporting both the university’s needs & the city’s Economic Development goals.
- Pull students and festival-goers downtown
- “Cultural quarter” connecting SUMA and Main street
- Connect downtowns to surrounding neighborhoods
- Attract housing downtown that contributes to a vibrant, lively commercial center.



MIXED USE IN THE DOWNTOWN

Cedar City Charrette

HOW IT COULD WORK:

MAIN STREET EXTENSION – MORE OF WHAT WORKS



This example of mixed use shows how re-development of the Main Street block between Center Street and First South could be achieved using building massing that is harmonious with the existing successful downtown core to the north.

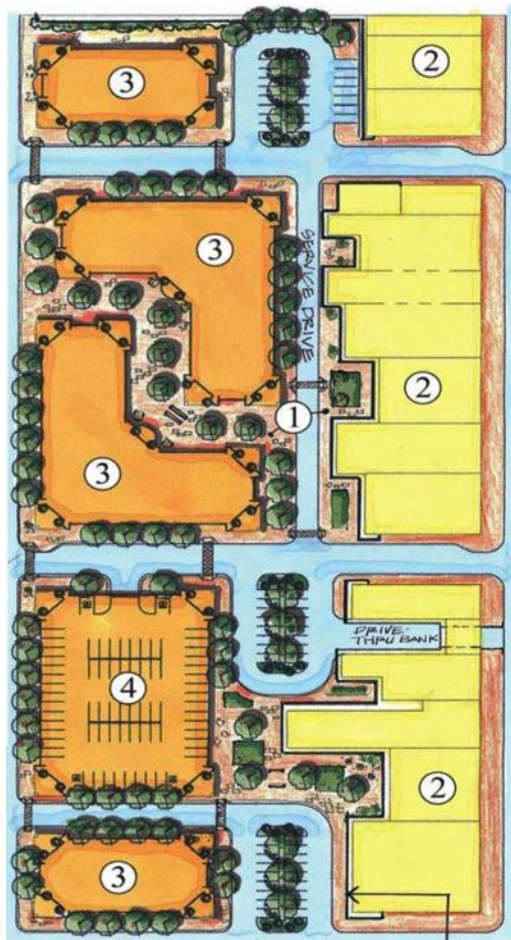
This approach uses mixed use tools to allow the diversity of businesses and uses that would be necessary to enable development of this type to take place. One way to encourage such development is to use form-based codes.

MIXED USE IN THE DOWNTOWN

Cedar City Charrette

HOW IT COULD WORK:

THE MAIN STREET “BACK” – BRIDGING DOWNTOWN AND THE NEARBY NEIGHBORHOODS



1. Pedestrian Plazas.
2. Existing Main Street buildings.
3. Retail, office and commercial spaces with lofts above.
4. Parking structure with active retail store frontage. (see elevation)
5. Proposed new facade to match new building facades.



MIXED USE IN THE DOWNTOWN

Cedar City Charrette



DOWNTOWN HOUSING

Cedar City Charrette



EXISTING HOUSING

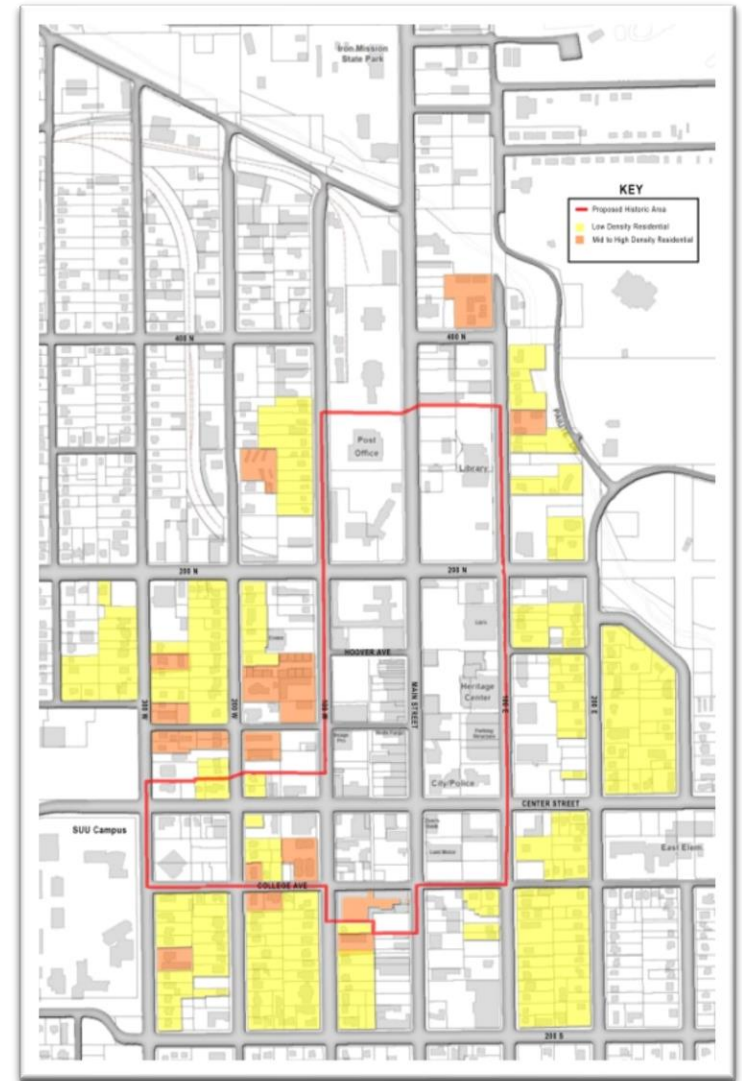
55 North 200 West
Cedar City, UT



Typical Single Family
Residence



103 West Harding
Ave. Cedar City, UT

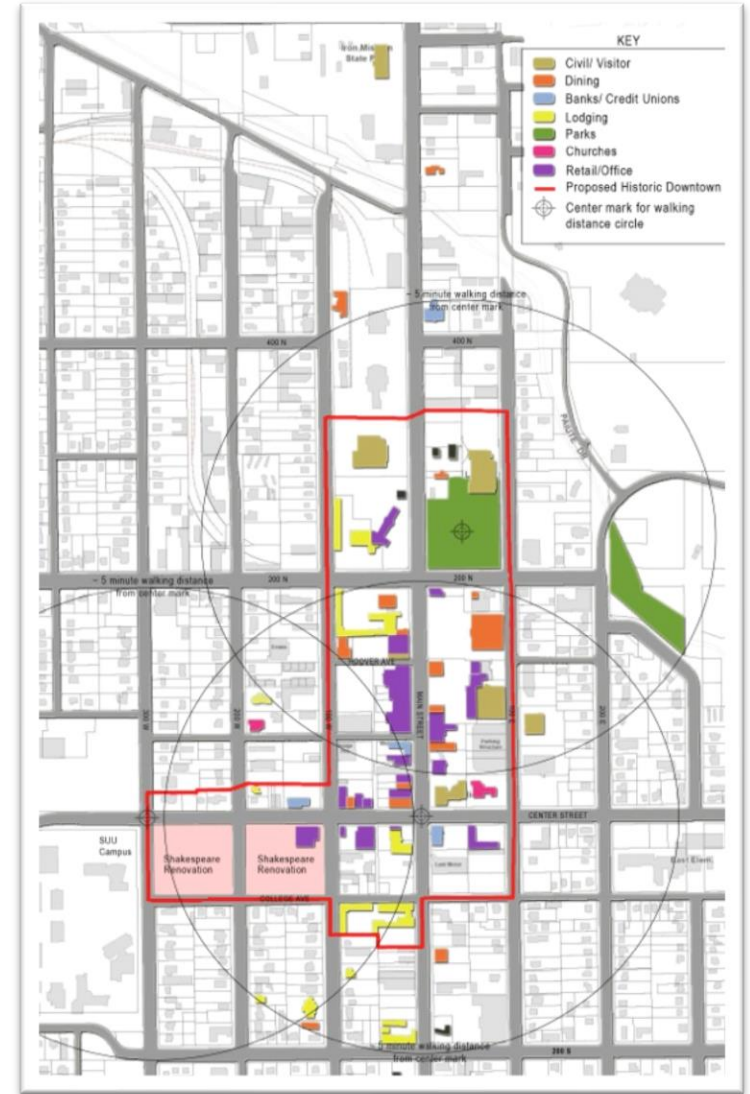


DOWNTOWN HOUSING

Cedar City Charrette

SITE ANALYSIS

- Green and Open Space
- Amenities
- Walking Analysis



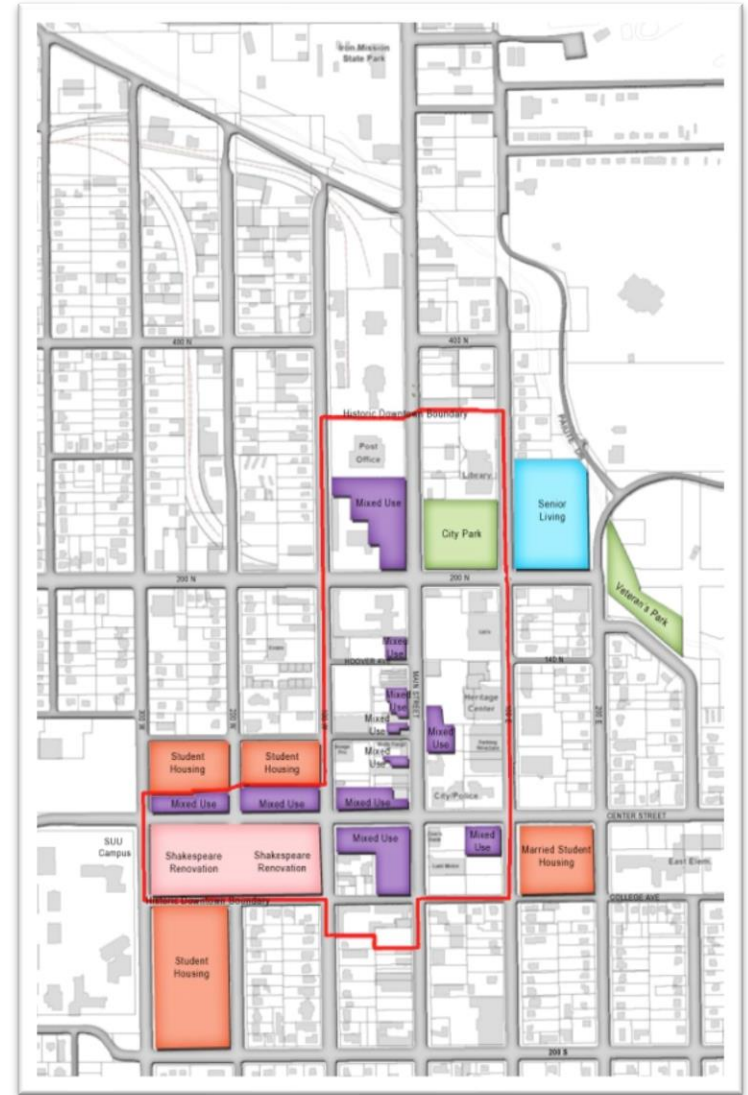
DOWNTOWN HOUSING

Cedar City Charrette

Boulder, CO



A large, multi-story house with a mix of red, tan, and grey siding, white trim, and a balcony, set in a suburban neighborhood. The house features a prominent front porch with white columns and a balcony on the second floor. The surrounding area includes a paved driveway, a lawn, and a white fence.



Cedar City Charrette

MIXED USE HOUSING

- 50,000 square feet of upper level space
- 100 new units at 500 square feet each
- \$500,000 worth of new revenue generated annually



DOWNTOWN HOUSING

Cedar City Charrette



NEW DEVELOPMENT IN DOWNTOWN

Cedar City Charrette



PRINCIPLES FOR DOWNTOWN DEVELOPMENT

Vibrant Day and Night

Reflects Richness of Cedar City

Strong Identity

IDENTIFIED OPPORTUNITIES

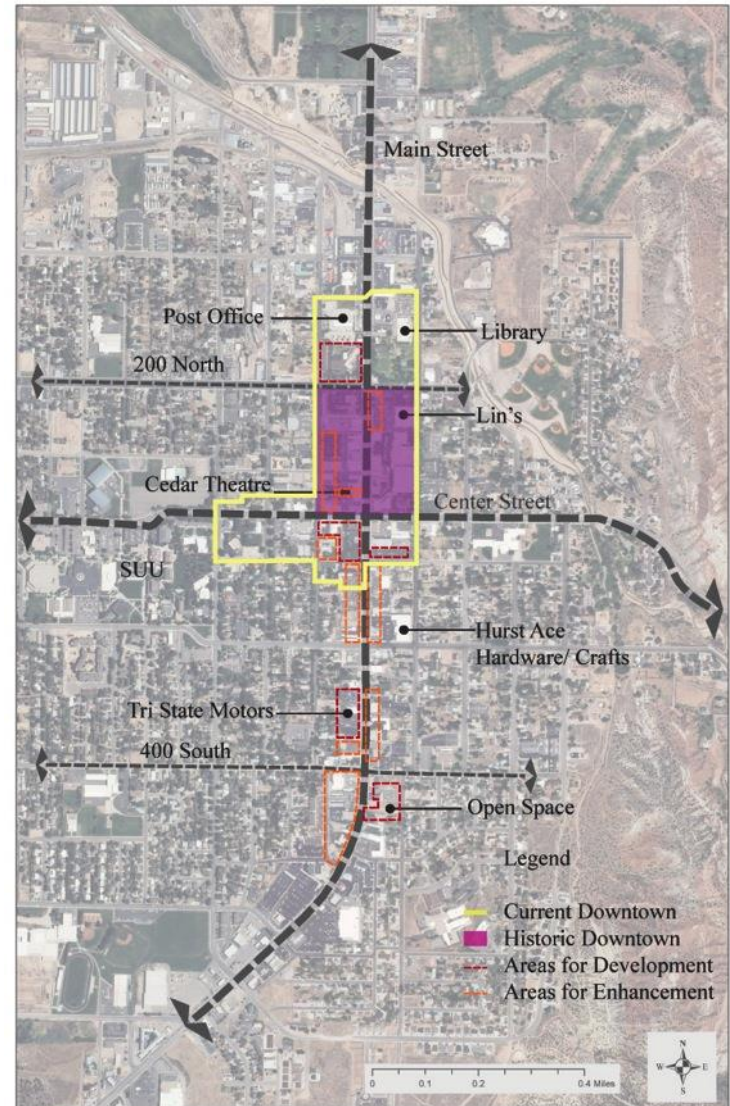
Cedar Theatre

Old West Steakhouse

Car Dealerships

3 on Main Street

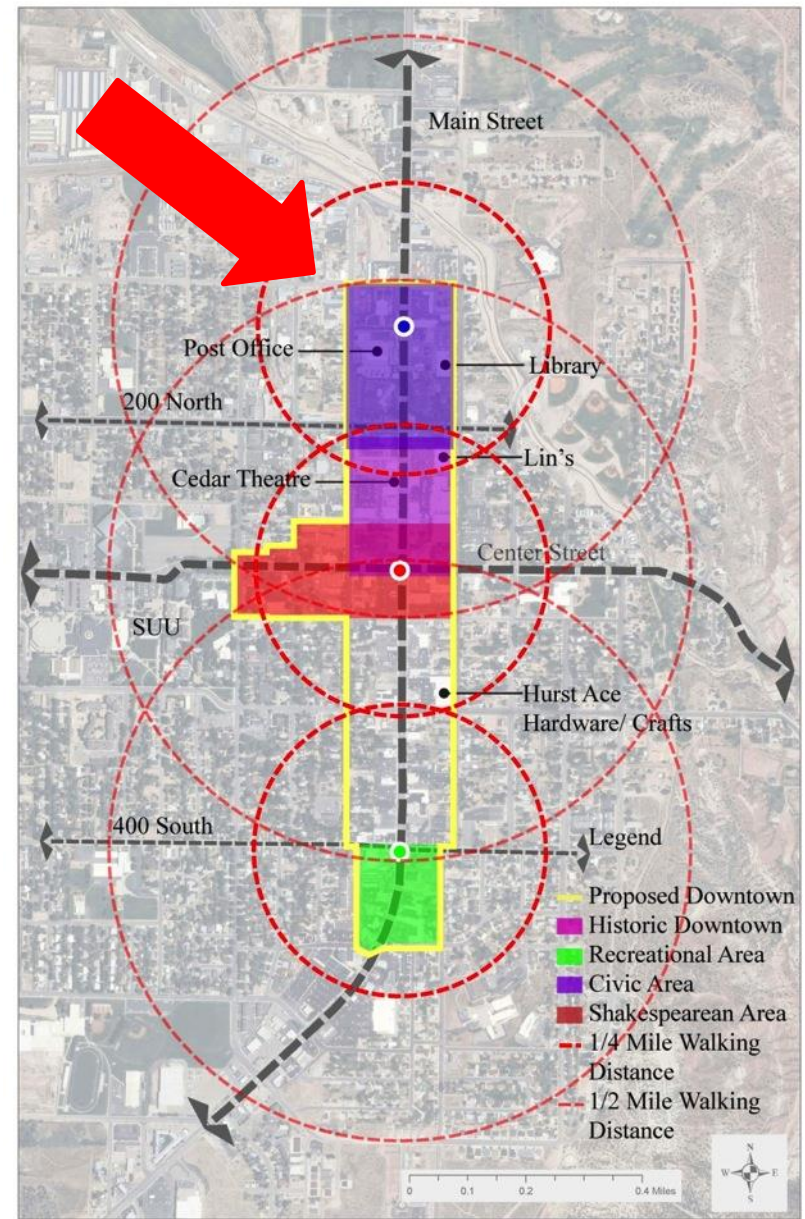
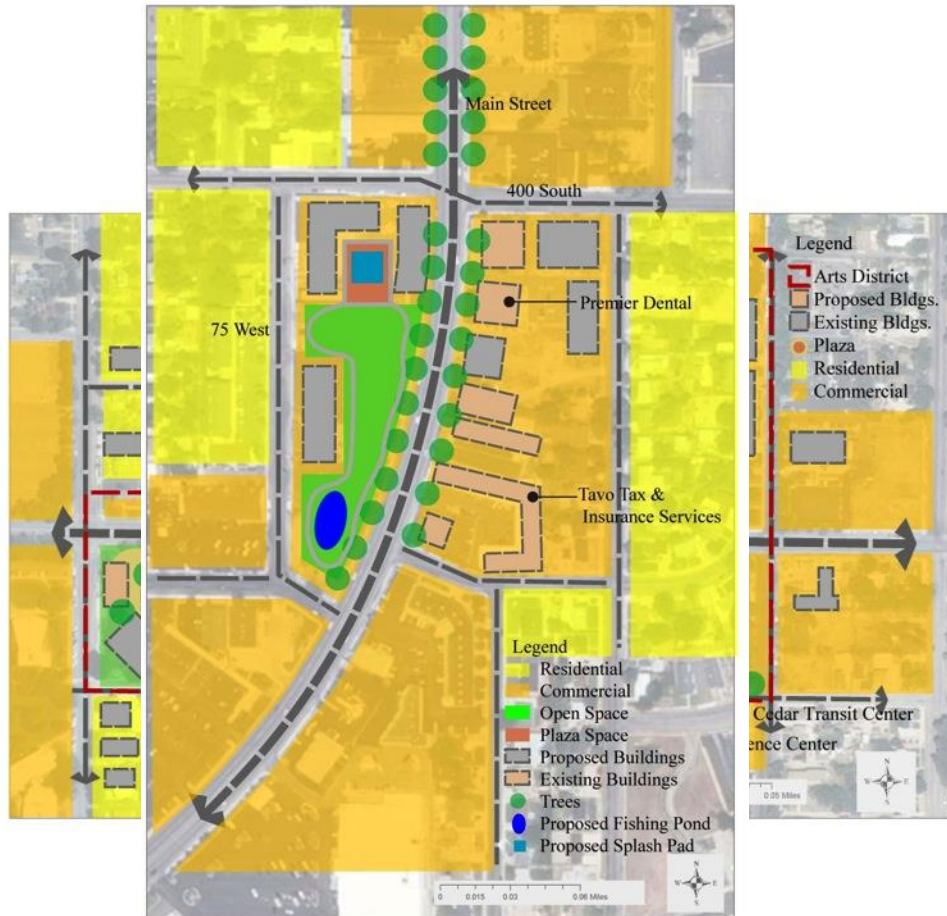
about 10 Acres



NEW DEVELOPMENT IN DOWNTOWN

Cedar City Charrette

THREE DISTINCT DISTRICTS



NEW DEVELOPMENT IN DOWNTOWN

Cedar City Charrette

CIVIC DISTRICT

Improvements to the Civic District

- Community Recreation Center
- Library
- Main street park



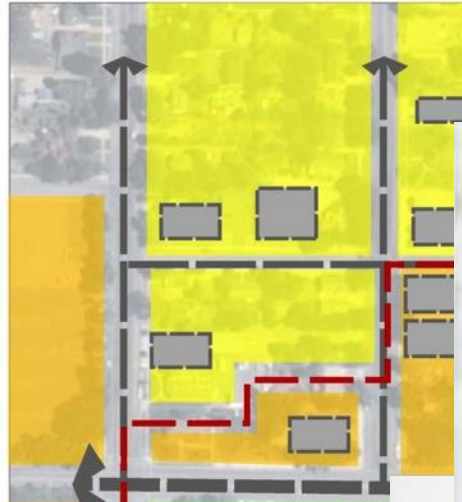
NEW DEVELOPMENT IN DOWNTOWN

Cedar City Charrette

ARTS DISTRICT

Improvements to the Arts District

- Shakespearean Plaza
- Transportation Hub
- Conference Center



NEW DEVELOPMENT IN DOWNTOWN

Cedar City Charrette



OUTDOOR RECREATION DISTRICT

Improvements to the Civic District

- Starting point outdoor enthusiasts
- Connections to trails
- Specialty shops
- Open space connecting the shops

• plaza space and open lawn

• splash pad or fish pond.

Newcastle Reservoir

(<http://www.utahfishinginfo.com>)



Zion National Park

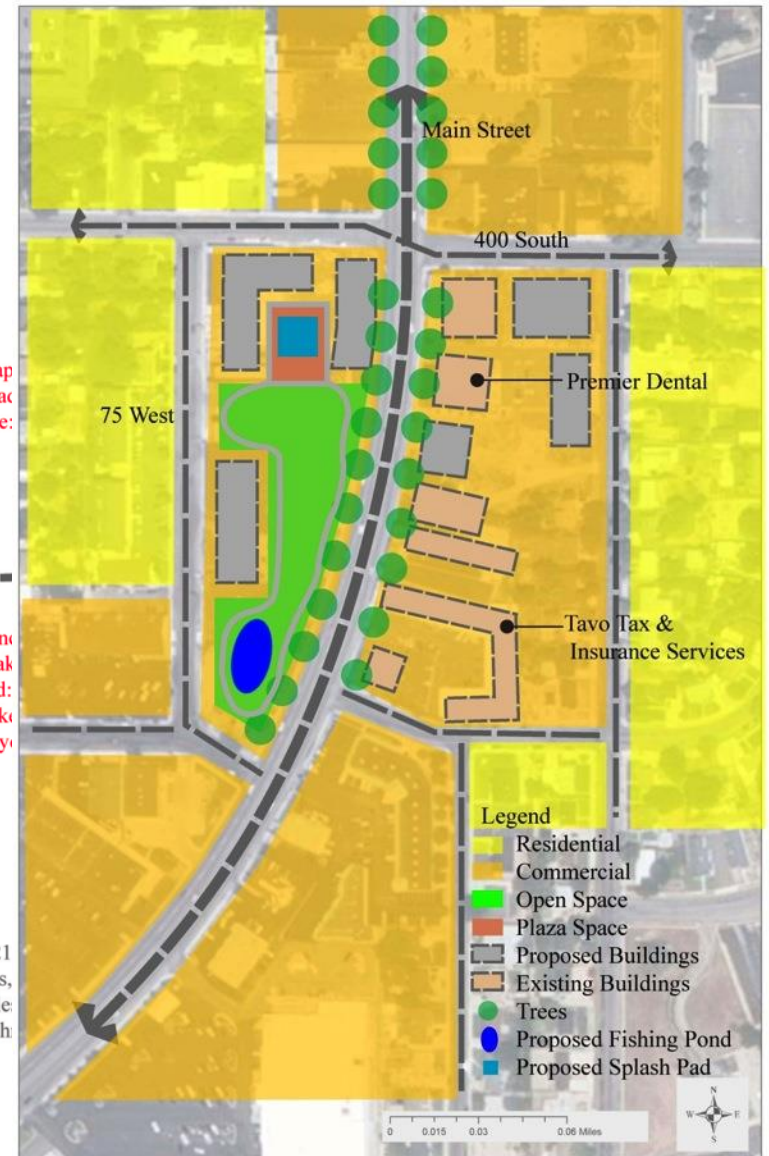
(<http://www.utahtripadvisor.com>)

Three Peaks: 20 miles, 1hr.
Newcastle Reservoir: 33 miles, 45 min.
Baker Reservoir: 65 miles, 1 hr. 15 min.
Pine Valley Reservoir: 72 miles, 1 hr. 30 min.

Parowan Gap
Yankee Mead
Navajo Lake:

Woods Ranch
Cedar Break
Brian Head:
Navajo Lake
Bryce Canyon

Kolob Canyon: 20 miles, 21
Quail Creek Lake: 50 miles,
Zion National Park: 62 mile
Lake Powell: 151 miles, 3 h



NEW DEVELOPMENT IN DOWNTOWN

Cedar City Charrette



DOWNTOWN LANDSCAPE & OPEN SPACE

Cedar City Charrette



WHAT IS OPEN SPACE?



- DOWNTOWN LANDSCAPE & OPEN SPACE

Cedar City Charrette

DOWNTOWN OPEN SPACE



DOWNTOWN LANDSCAPE & OPEN SPACE

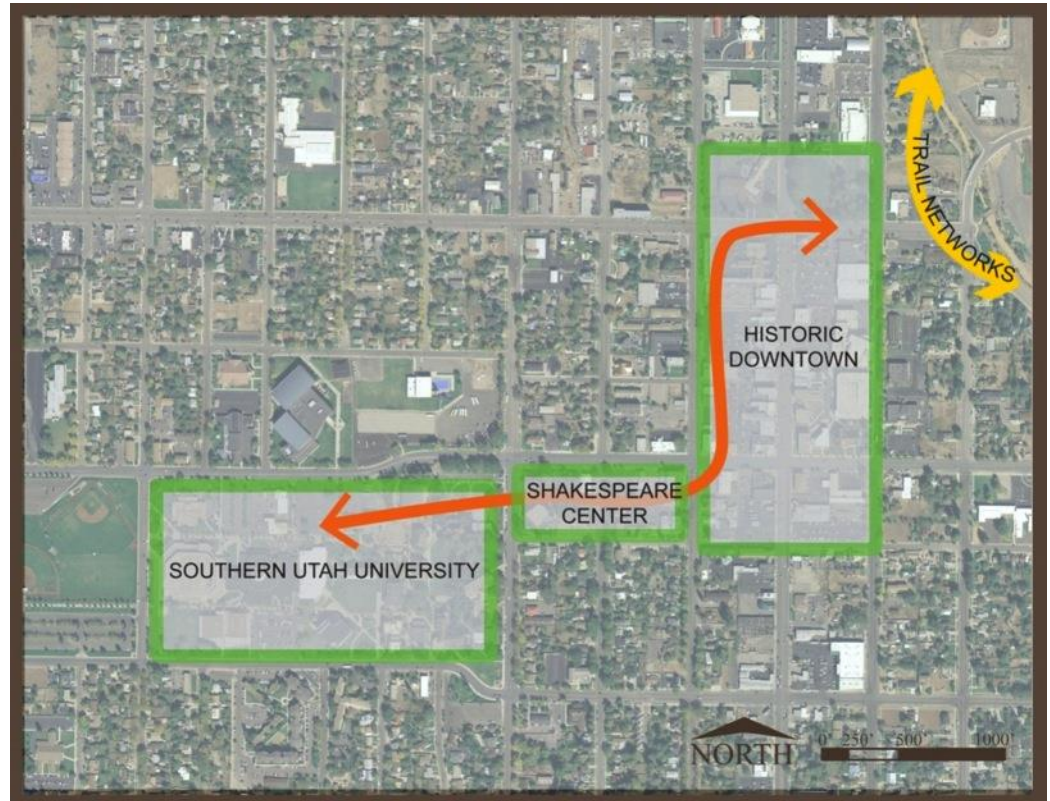
Cedar City Charrette



BUILD CONNECTIVITY THROUGH OPEN SPACE DEVELOPMENT

PRINCIPLES:

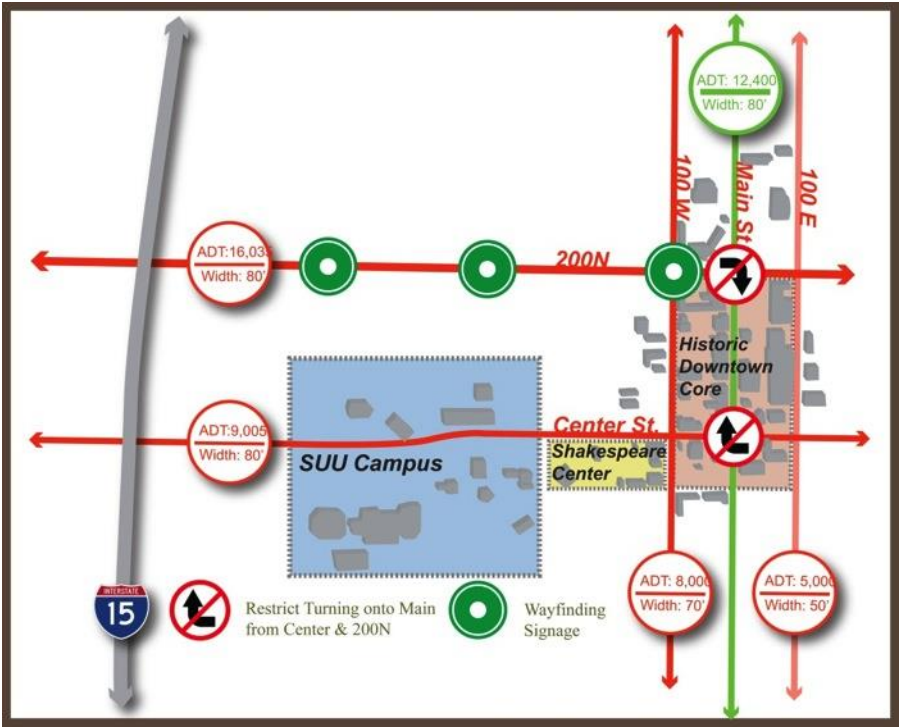
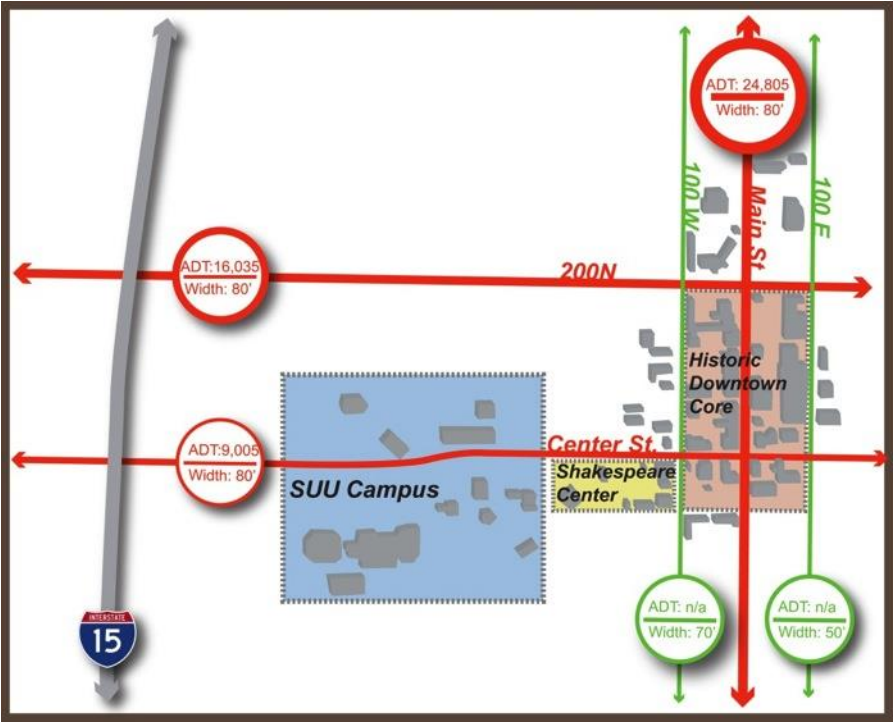
1. Enhance the pedestrian experience
2. Invigorate the downtown retail environment
3. Pronounce the cultural identity



DOWNTOWN LANDSCAPE & OPEN SPACE

Cedar City Charrette

TRAFFIC SOLUTIONS FOR DOWNTOWN OPEN SPACE



DOWNTOWN LANDSCAPE & OPEN SPACE

Cedar City Charrette

DESIGN SOLUTIONS FOR DOWNTOWN OPEN SPACE



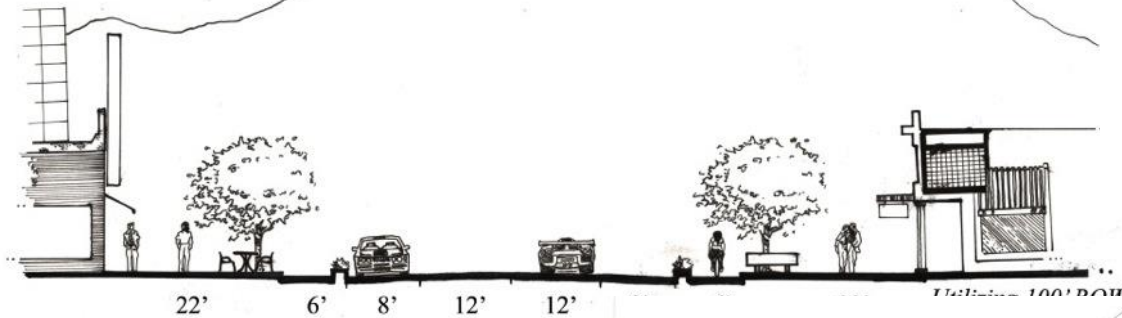
- | | | |
|------------------------------|-----------------------------|-------------------|
| 1. New Shakespearean Theatre | 5. Randall L. Jones Theatre | 8. Retail Shops |
| 2. Scenery Studio | 6. Inn | 9. Restaurants |
| 3. Costume Studio | 7. Clock Tower/Entry Arch | 10. Seminar Grove |
| 4. Playwrights Theatre | | |



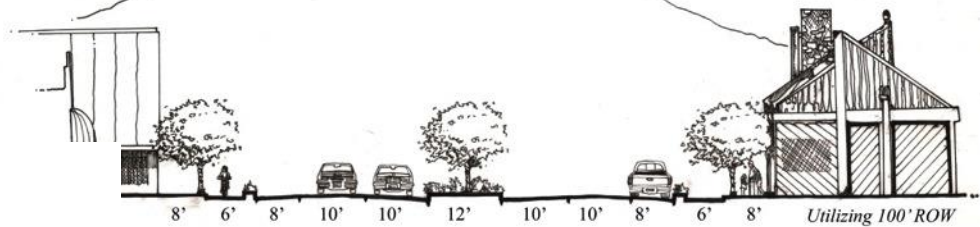
DOWNTOWN LANDSCAPE & OPEN SPACE

Cedar City Charrette

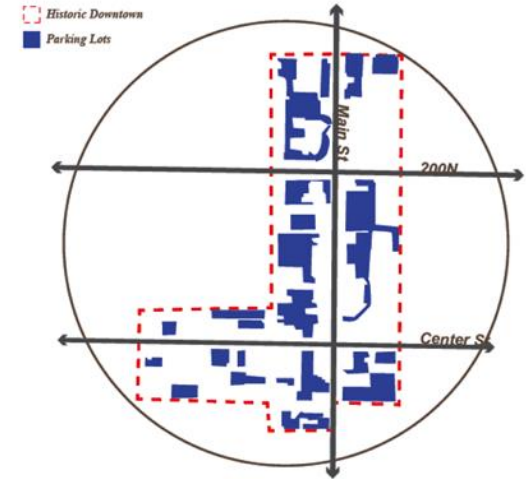
OPEN WALKWAYS & BIKEWAYS



MAIN STREET



CENTER STREET



DOWNTOWN LANDSCAPE & OPEN SPACE

Cedar City Charrette

MAIN STREET OPEN SPACE REDEVELOPMENT



DOWNTOWN LANDSCAPE & OPEN SPACE

Cedar City Charrette

HOOVER AVE & PARKING LOT REDEVELOPMENT



DOWNTOWN LANDSCAPE & OPEN SPACE

Cedar City Charrette



DOWNTOWN LANDSCAPE

Cedar City Charrette



INTRODUCTION

- Definition of Landscape- An expanse of scenery that can be seen in a single view.
- Cedar City's downtown provides a variety of views that help establish a unique identity.

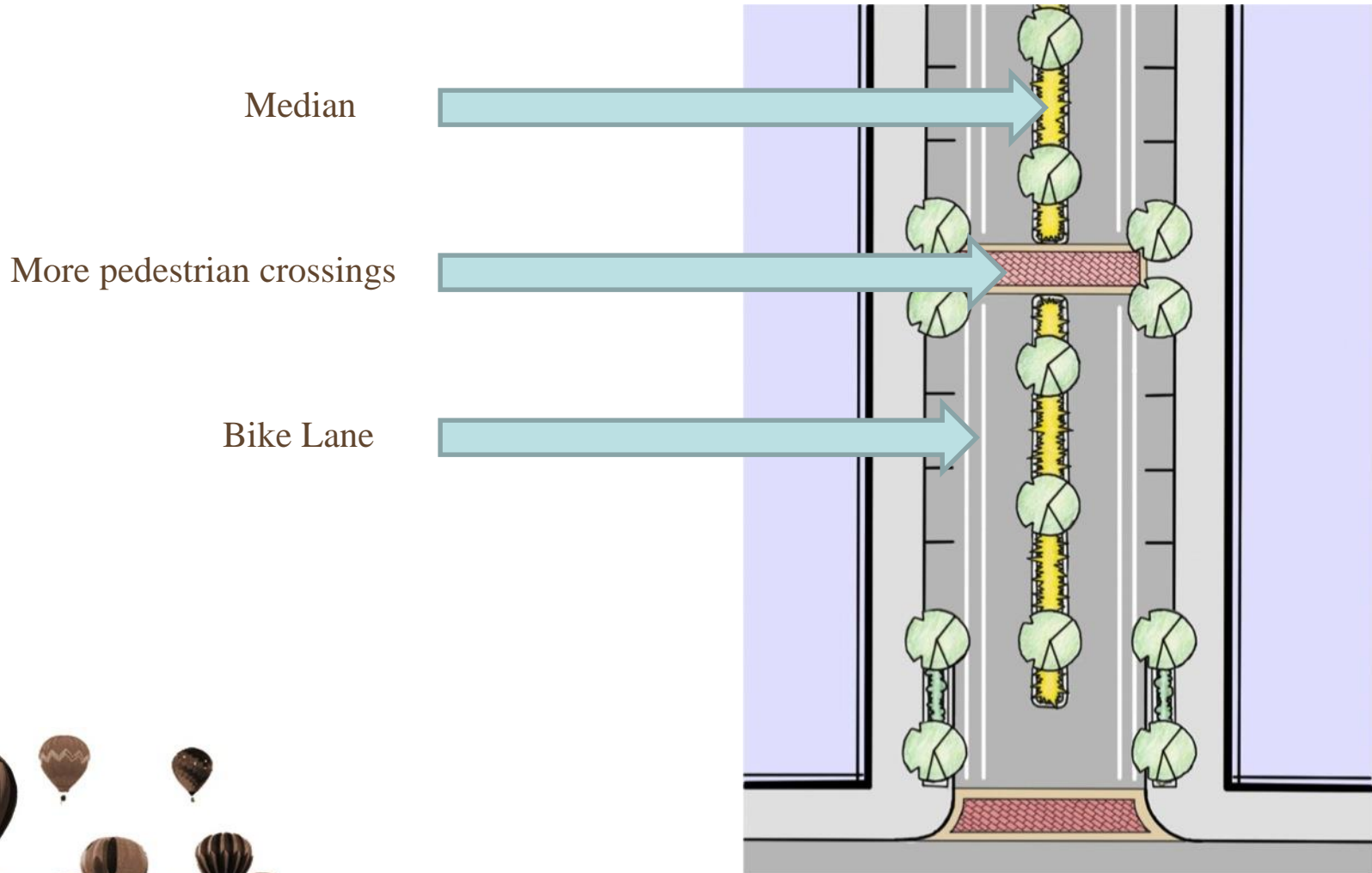


GOALS

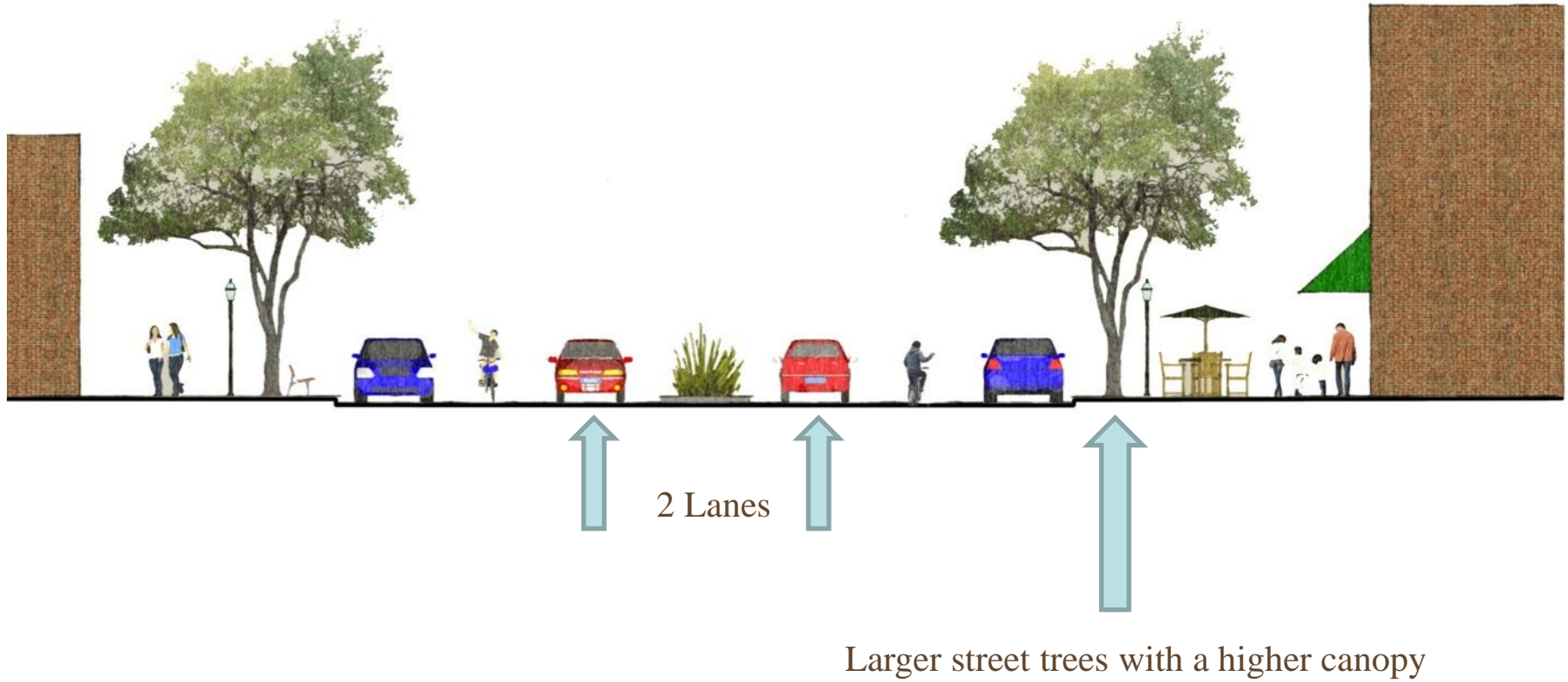
- Enhance the experience for Main Street pedestrians
- Accentuate the connection of the downtown to the surrounding landscape
- Promote sustainable practices
- Unify the downtown area



ENHANCE EXPERIENCE FOR MAIN ST. PEDESTRIAN

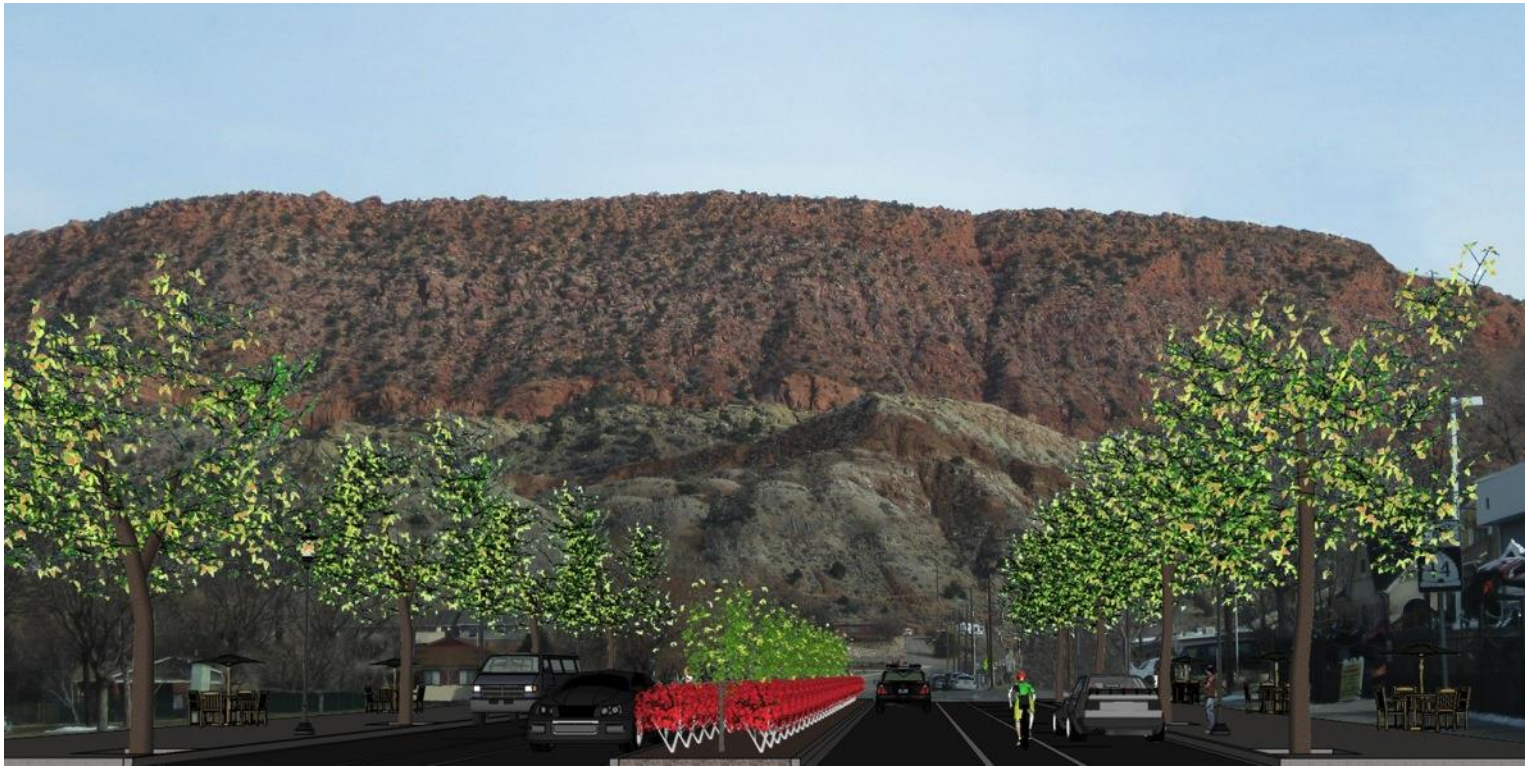


ENHANCE EXPERIENCE FOR MAIN ST. PEDESTRIAN



Cedar City Charrette

CONNECTION OF DOWNTOWN TO SURROUNDING LANDSCAPE

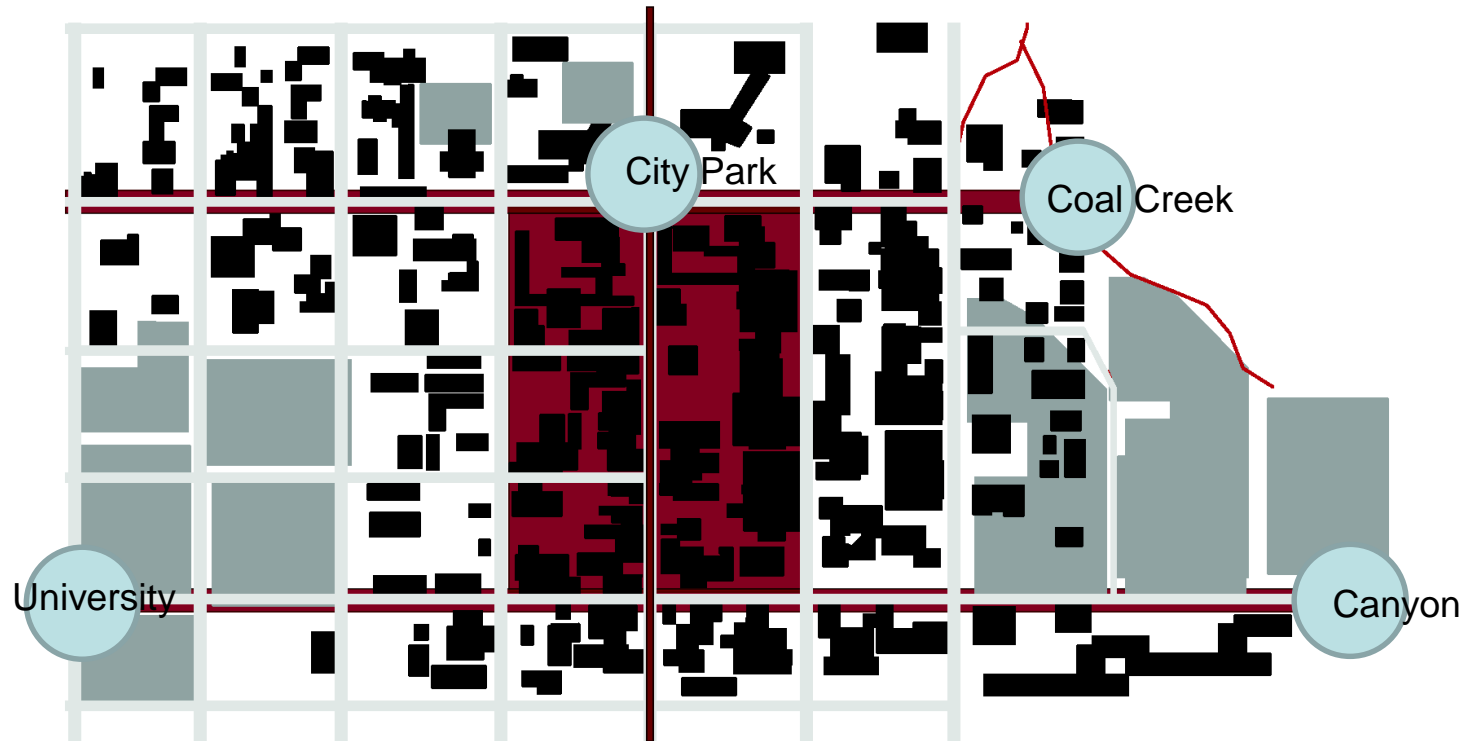


Center Street looking East



Cedar City Charrette

UNIFY DOWNTOWN



Downtown- Linkage to surroundings



Cedar City Charrette

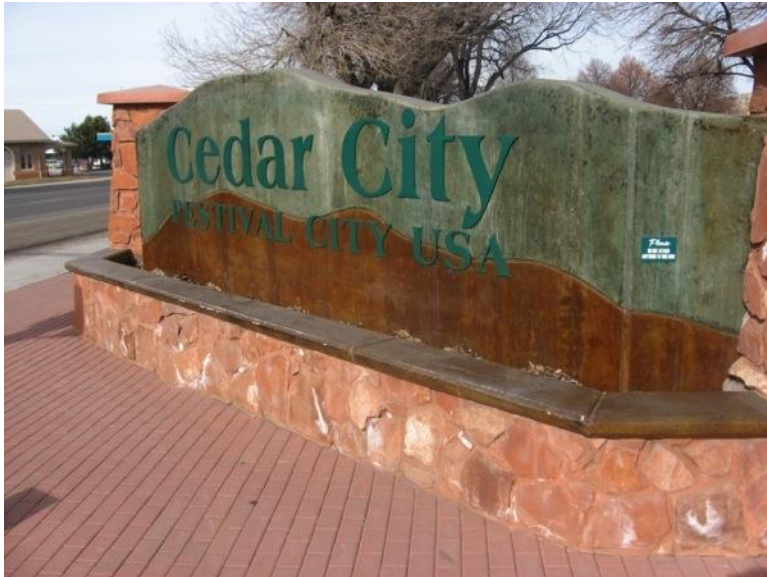


URBAN OPEN SPACE, PARKS AND TRAILS

Cedar City Charrette



AREAS OF FOCUS



- Proposed Open Space and Connectivity
- Veterans Memorial Park
- Main Street Park



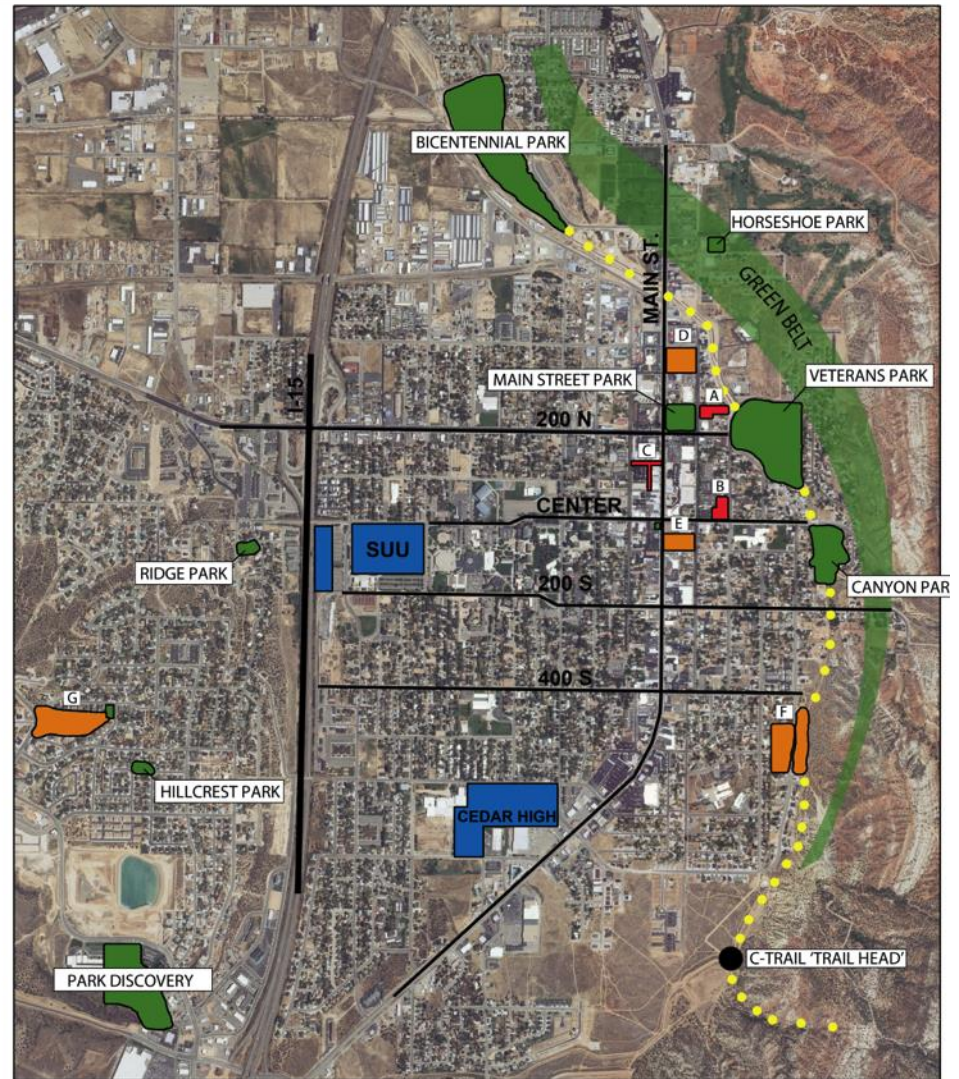
Cedar City Charrette

PROPOSED OPEN SPACE AND CONNECTIONS

Potential Open Space

- Green – Existing Parks/Open Space
- Blue – Institutional Open Space
- Red – High Priority Proposed Open Space
- Orange – Secondary Proposed Open Space

Proposed open space will increase “Green Belt” connectivity



VETERANS MEMORIAL PARK IMPROVEMENTS

Designing For The Users

- Elderly
- Elementary aged children

Hierarchy of Spaces

- Public
- Semi-public
- Private

Tribute to Veterans

- Memorial grove
- Climbing roses



MAINSTREET PARK MASTER PLAN



Create gathering spaces for:

- Festivals
- Community events
- Award ceremonies
- Performances

Site amenities:

- Grass Amphitheatre
- Social plazas
- Playground
- Restrooms
- Meandering walkways
- Water feature
- Active and passive rec. spaces



INSPIRATION FOR PARK DESIGN



<http://www.johnpratt.com/items/docs/lds/meridian/2006/petroglyphs.html#1.1>

Hardscape design

- Paiute pictograph
- Little Coal Creek water feature



Cedar City Charrette

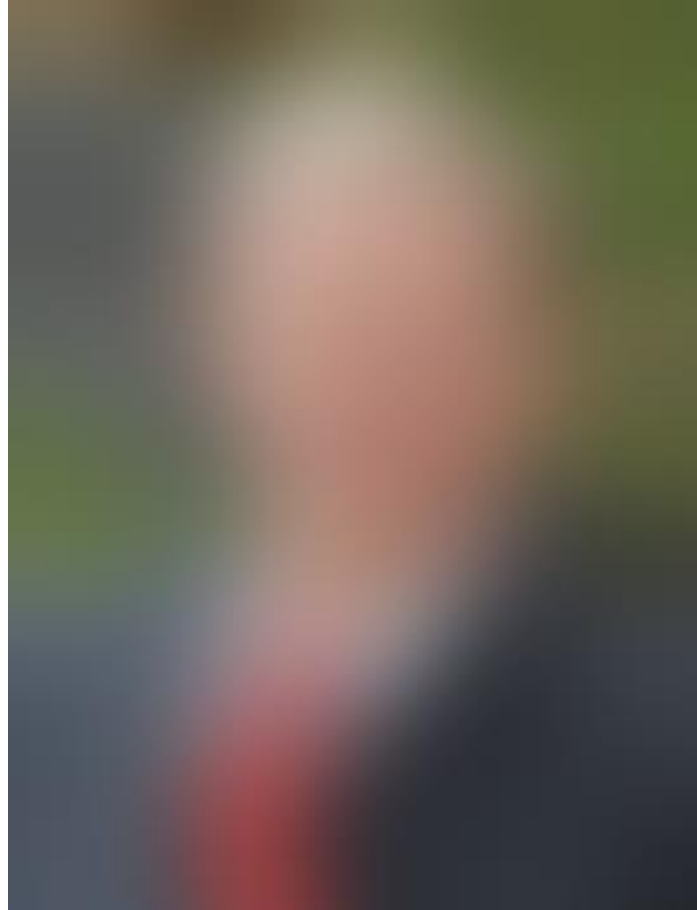


CREATING A RELATIONSHIP: THE PAIUTE INDIAN RESERVATION & CEDAR CITY

Cedar City Charrette



CREATING AND ENHANCING RELATIONSHIPS



Cedar City Charrette

CREATING AND ENHANCING RELATIONSHIPS



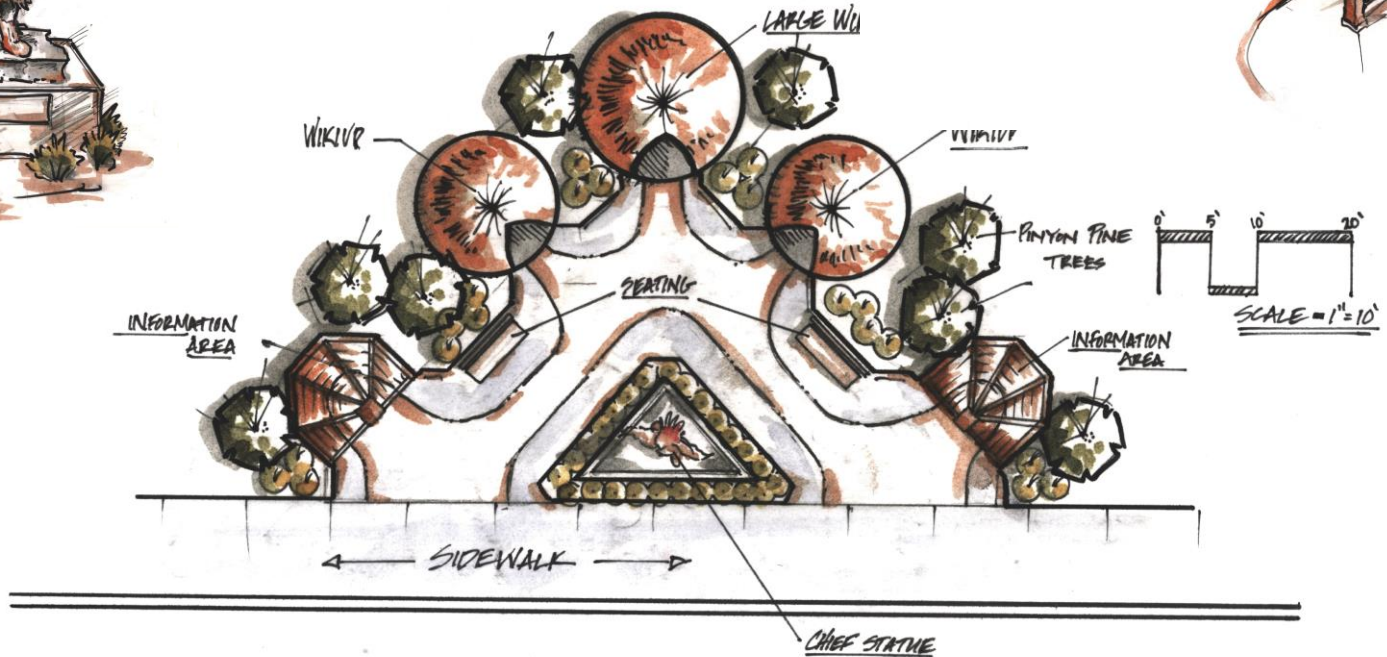
Cedar City Charrette

INTERPRETIVE SIGNAGE AND EXHIBITS



Cedar City Charrette

INTERPRETIVE SIGNAGE AND EXHIBITS



CULTURAL CENTER



Cedar City Charrette

TRIBAL MARKET



Cedar City Charrette

WICKIUP CAMPGROUND & PINYON PINE GROVE



Cedar City Charrette

WILDFLOWER MEADOW



Cedar City Charrette



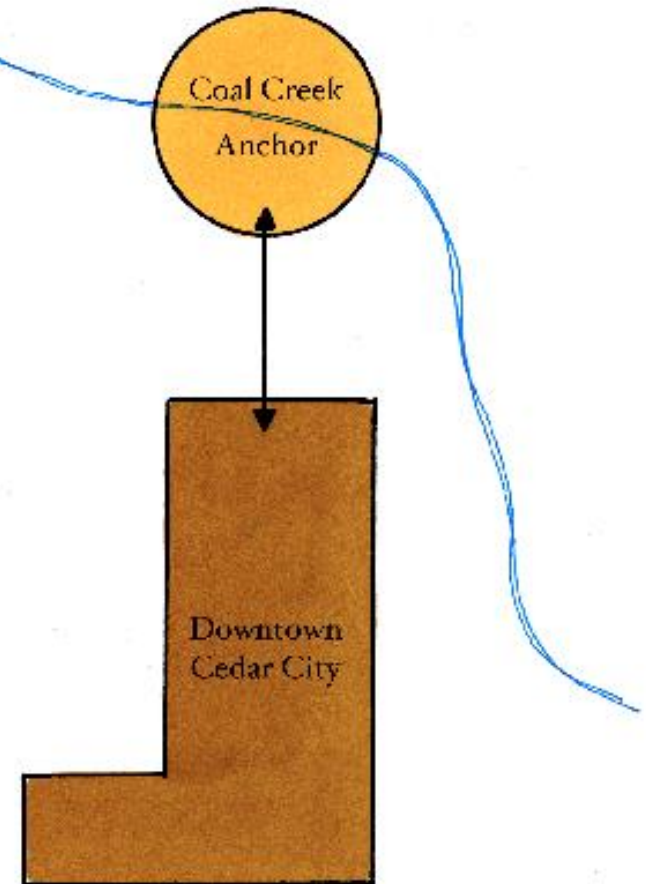
COAL CREEK WATERFRONT DEVELOPMENT

Cedar City Charrette



CREATING AN ANCHOR AT COAL CREEK FOR DOWNTOWN CEDAR CITY

The Coal Creek Waterfront area offers the community of Cedar City an opportunity to enhance and expand its downtown by establishing an anchor at the north end of Main Street.



Coal Creek Waterfront Development

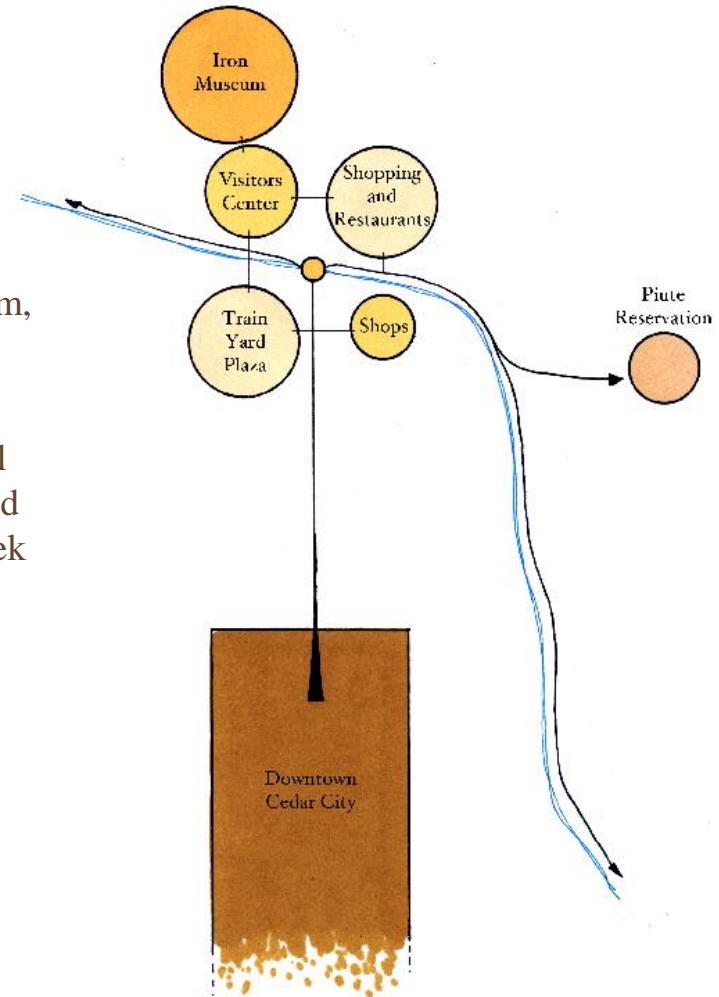
Cedar City Charrette



PROVIDE UNIFYING SPACE FOR CEDAR CITY' S NORTH ENTRANCE

The area adjacent to Coal Creek is home to many of the community' s cultural landmarks, including the Iron Museum, Visitor Center, and Piute Reservation.

By preserving the historic rail station, providing additional public space along the creek, increasing local amenities, and improving the pedestrian circulation network, the Coal Creek Waterfront will provide a unifying focal point and entry experience for Cedar City.



STREAMSIDE PLAZA



Establishing a streamside plaza would provide the public with an opportunity to interact with one of Cedar City's under used amenities, Coal Creek.



Cedar City Charrette

LANDSCAPED TRAILS AND SCREENING VEGETATION

Increasing vegetation along the Coal Creek trail network will provide users with an enjoyable experience by providing shade, attracting wildlife, screening unsightly views and establishing a well defined pedestrian corridor between Cedar City's green spaces.





UNIVERSITY & DOWNTOWN RELATIONSHIPS

Cedar City Charrette



INTRODUCTION:

- Downtown Student Amenities and Destinations
- Downtown Student Activities and Programs
- Center Street... The Vital Connection



SUU STUDENT SURVEY:

- 26 SUU Juniors and Seniors
- Ten questions about downtown Cedar City

QUESTIONS:

1. On average how many times do you spend money downtown per month?
2. If someone told you they were going to meet you downtown, in your mind where is “downtown”?
3. What downtown activities do you currently participate in?
4. What do you do more of in downtown Cedar City?
5. What activities or amenities would you like to see more of in downtown Cedar City?
6. How do you typically travel downtown?
7. Would you ever consider living downtown?
8. What times of day do you go downtown?
9. What do you like most about SUU?
10. What do you like the most about Cedar City?



THE STUDENT VOICE:

“Bring the old movie theater back!”

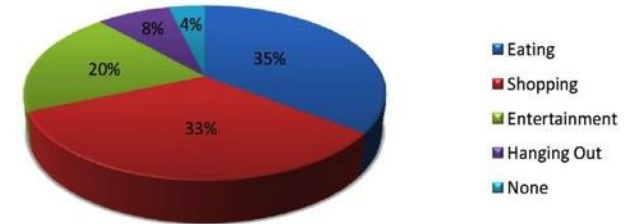
“More activities and things to do”

“Things to actually do”

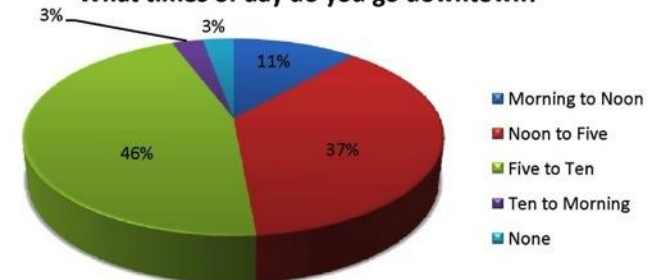
“I... didn't think Cedar had a downtown”

“I don't think there really is a downtown”

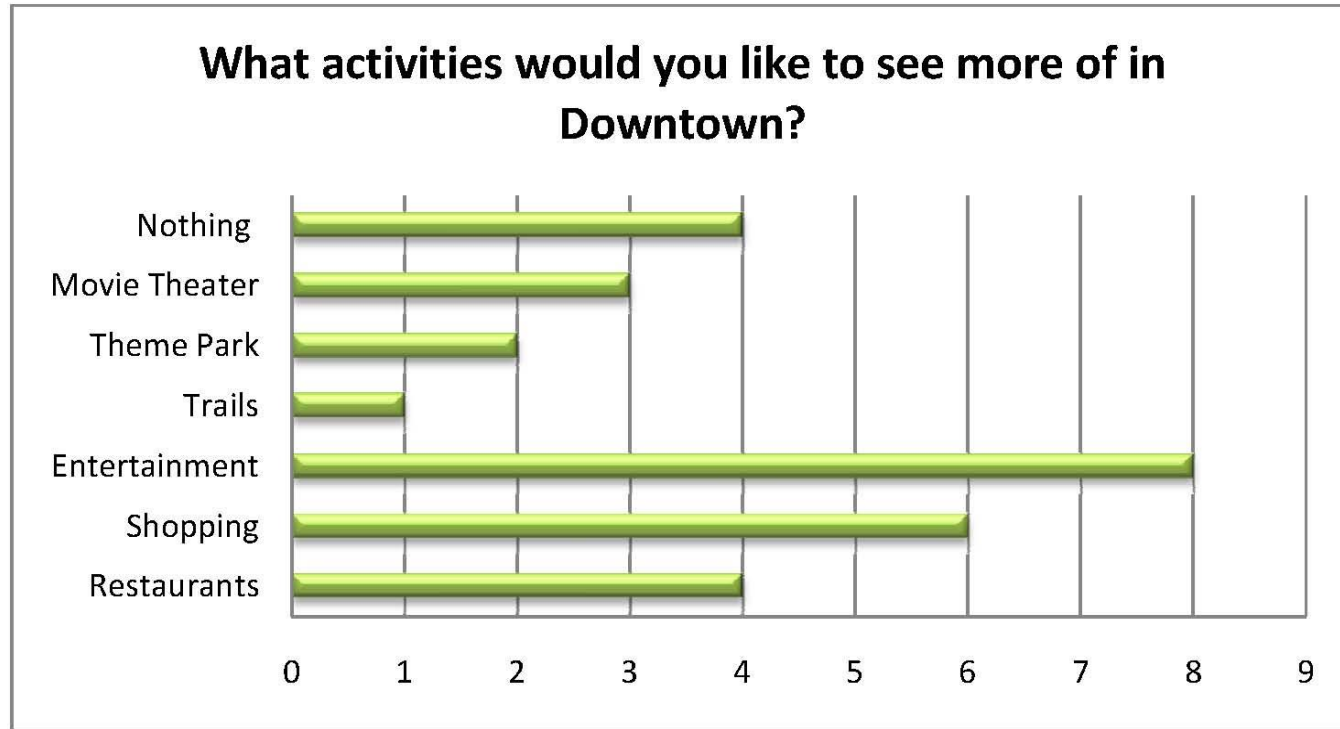
What Downtown activities do you currently participate in?



What times of day do you go downtown?



RESULTS:






SURVEY CONCLUSIONS:

1. Students already participate in some eating and shopping in the downtown.
2. The average student is downtown between the hours of 5-10 pm.
3. Students want more types of entertainment in the downtown.
4. Students are typically only driving to downtown.

Design principles and future developments need to be directed around these four conclusions in order to have successful participation of students in Downtown Cedar City.



DOWNTOWN DESTINATIONS:

-  Existing Student Destinations
-  Future Student Destinations
-  Future Student Areas as proposed charrette wide.

Student amenities and destinations exist, but unique interesting spaces are needed to unite them together.

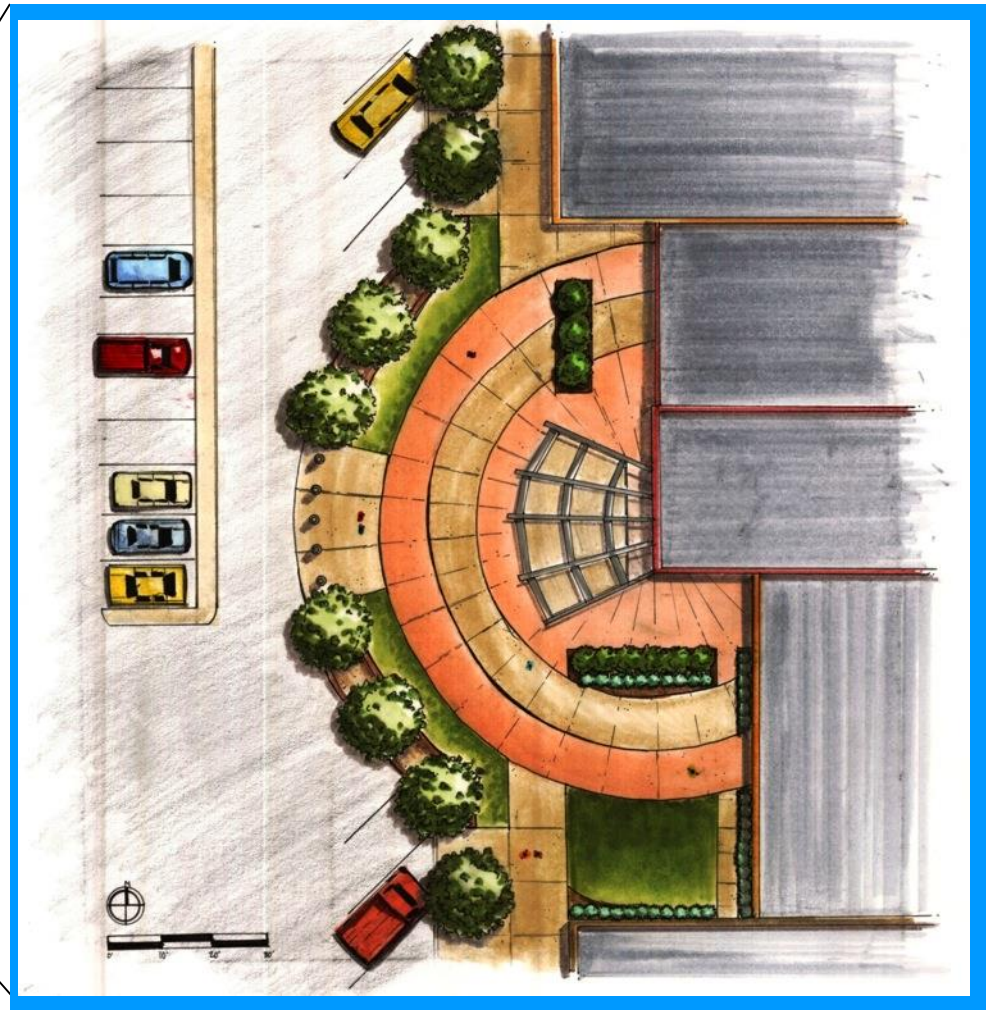


TEAM 3 – UNIVERSITY AND DOWNTOWN RELATIONSHIPS

Cedar City Charrette



SAMPLE STUDENT PLAZA:



This student plaza capitalizes on the unique buildings on Main Street, unites student amenities downtown, while providing a place for students to hang out as well as have performances and activities.

TEAM 3 – UNIVERSITY AND DOWNTOWN RELATIONSHIPS

Cedar City Charrette

CASE STUDIES & PRECEDENTS:

“First Thursday” - Austin, Texas

- Block party for all ages
- Monthly activity
- Close the street
- Discount food and drinks
- Stores stay open late



<http://www.firstthursday.info/>

“Alive after Five” – Concert Series – Boise Idaho

- Every Wednesday
- Live Music
- Street Vendors
- Food and Beverages
- Family and Students
- FREE
- 5-8pm



“First Thursday” - Gallery Walk - Portland, Oregon

- Art
- Wine
- Music
- 6-9pm
- Stores open late



<http://www.firstthursdayportland.com/>

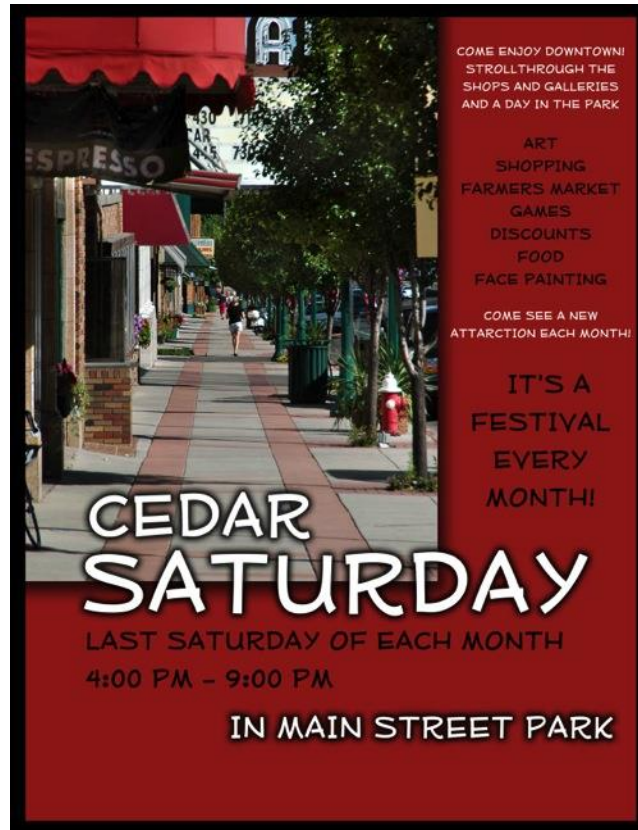


<http://peachin.blogspot.com/2010/09/60017853697.html>

Cedar City Charrette

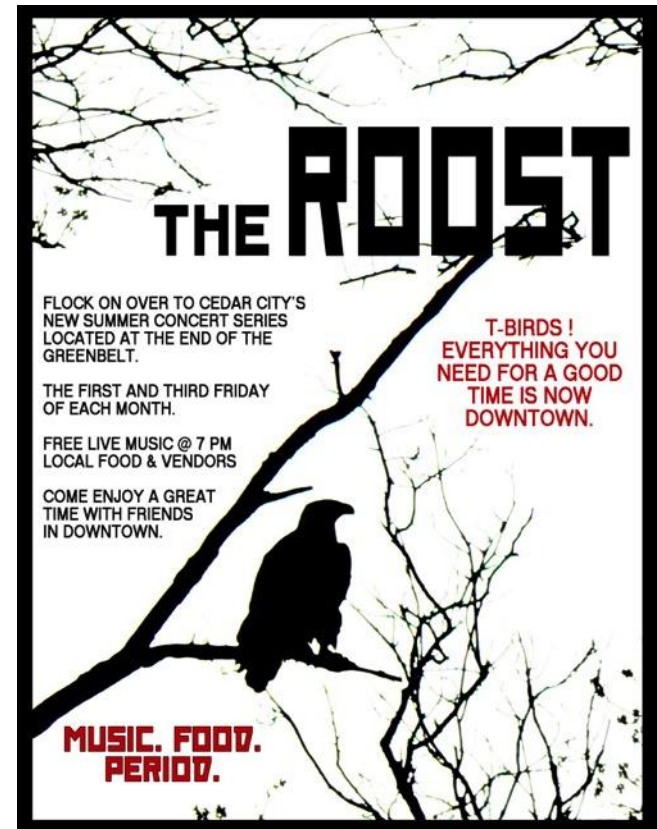
TWO PROPOSED STUDENT ACTIVITIES:

- Farmers markets
- Shopping booths
- Food vendors
- Local artists
- Student Clubs
- Kids Activities
- Students and Families



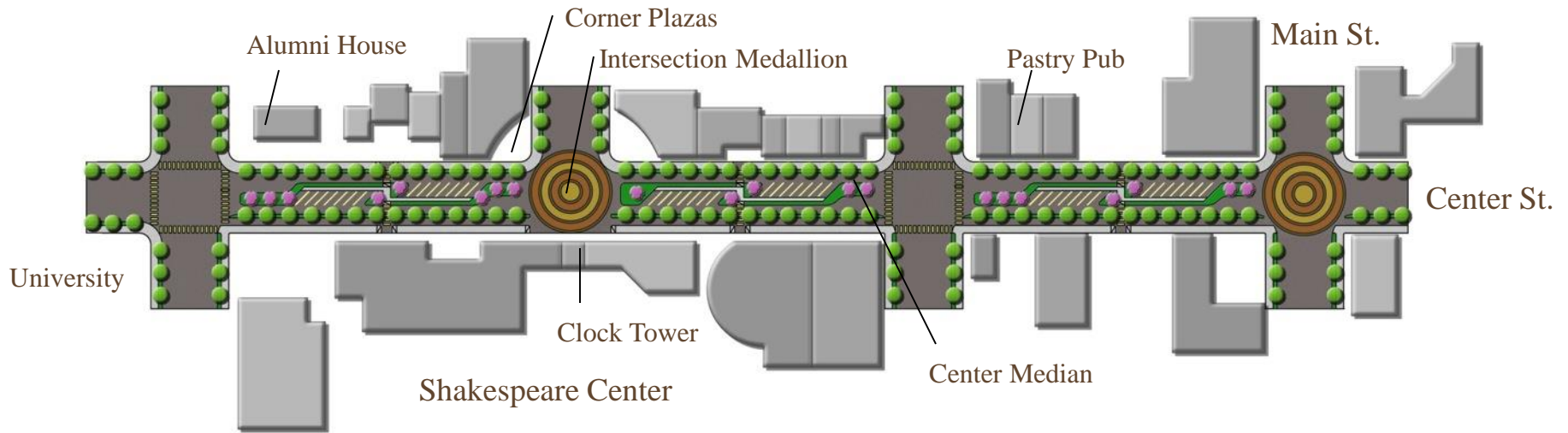
- Live music
- Food Vendors
- Shops open late

- Outdoor Movies
- Discount Shopping
- Student oriented



Cedar City Charrette

STREETSCAPE PLAN VIEW:

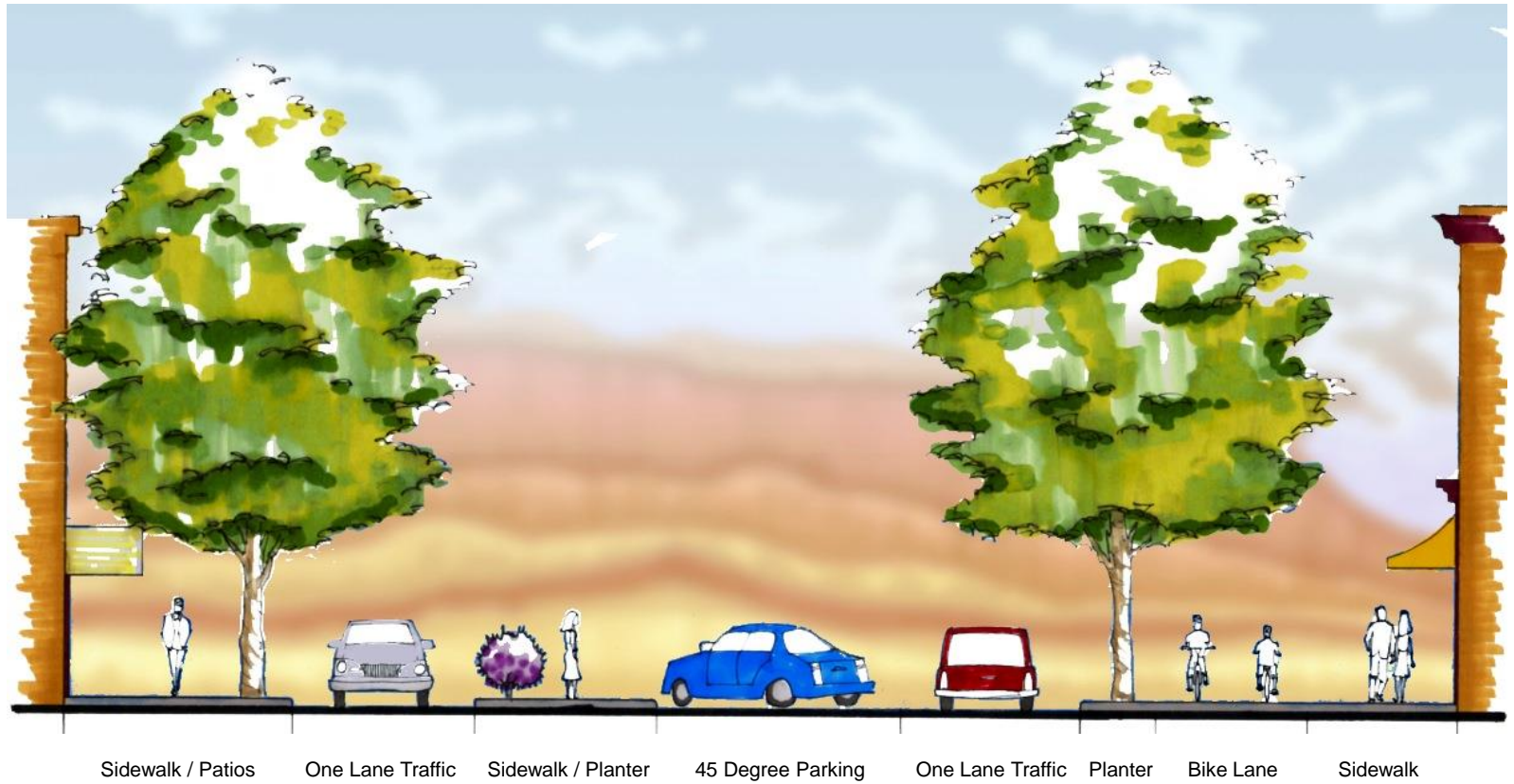


ELEMENTS:

- The second lane was taken out to increase pedestrian space. Narrower streets encourage cars to slow down and create pedestrian spaces.
- Crosswalks every half block provide maximum pedestrian access from the Shakespeare Center
- The center median provides visual interest to the road as well as on street parking with safe pedestrian pathways.
- The bike path is two way in order to encourage students to get downtown easily without their car. It would be able to also link with other city bike paths to unite the entire community.



STREETSCAPE CROSS SECTION:



Cedar City Charrette

200 W. and CENTER STREET:



Shakespeare clock tower with tall statues along opposing corners. The tower is such a dominating element to the South so the opposing statues and corner buildings help anchor the entire space.



CENTER STREET VIEW TO THE EAST:



Narrowing the street provides lots of room for outdoor patios and courtyards. These spaces help link the student amenities throughout the blocks. The vegetation helps shield cars, and slows traffic along the vibrant street.



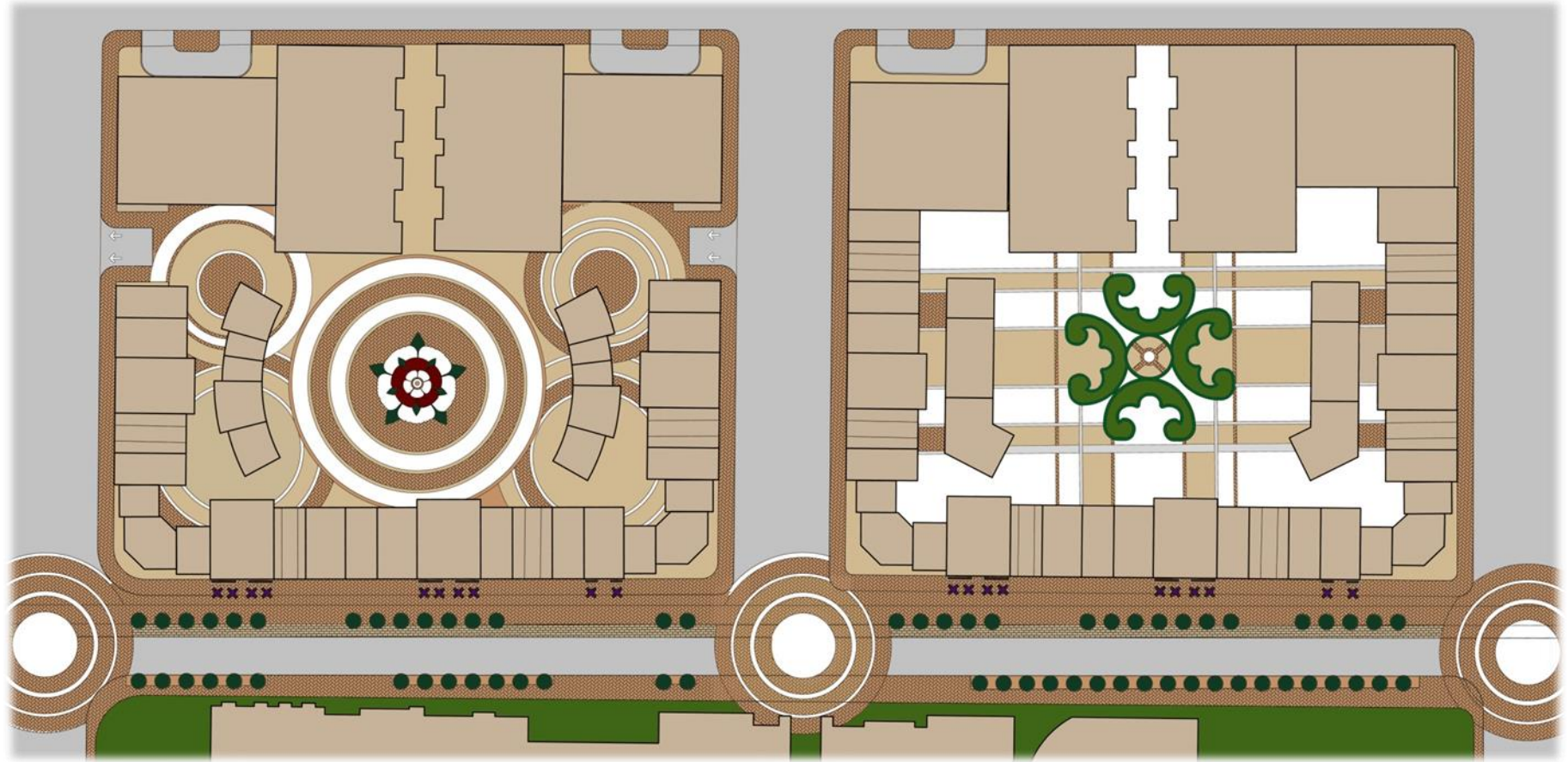


UTAH SHAKESPEAREAN FESTIVAL COMMUNITY CONNECTIONS

Cedar City Charrette

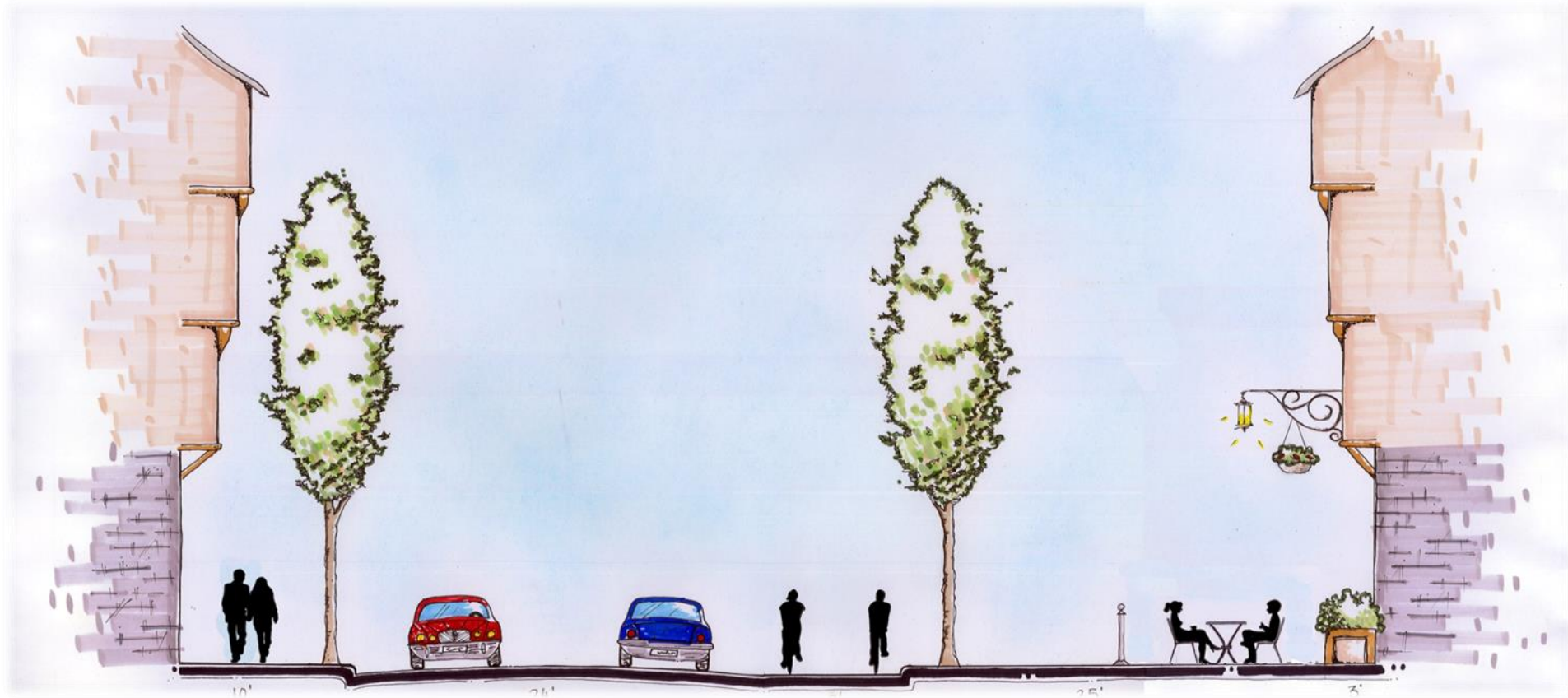


SITE PLAN FOR BLOCKS NORTH OF SHAKESPEAREAN FESTIVAL



Cedar City Charrette

STREETSCAPE CROSS SECTION



Cedar City Charrette

NEW VIEW NORTH AND EAST OF SHAKESPEAREAN FESTIVAL



Cedar City Charrette